

PHILLIPS

PRESS RELEASE

Phillips to Offer World View: Property from a Private Collection in the New York Photographs Auction on 1 October

**Featuring Works by Robert Frank, Dave Heath, André Kertész,
Helmut Newton, Edward Burtynsky and Robert Polidori, Among Others**



Robert Frank

Covered Car—Long Beach, California, 1955-1956

Estimate: \$70,000–90,000

NEW YORK – 5 SEPTEMBER 2019 – Phillips is pleased to announce the sale of *World View: Property from a Private Collection* as a highlight of the fall sale season. To be included in the New York Photographs auction on 1 October, *World View* was formed over the course of twenty years and includes images encapsulating the human experience. This dynamic collection includes a wide-ranging group of photographs which, when combined, display the remarkable diversity of photography in the 20th and 21st centuries.

Vanessa Hallett, Deputy Chairwoman, Americas, and Worldwide Head of Photographs, said, “From New York City to Long Beach, and from Paris to Bangkok, *World View* brings together images from across the globe. The collection is full of visual and cultural juxtapositions that address universal themes and experiences, bringing together a group of photographs unified by a sense of humanity and the medium’s expressive power.”

Among the highlights of *World View* is Robert Frank's *Covered Car— Long Beach, California, 1955-1956* (illustrated page 1), which exemplifies the photographer's long-held fascination with the American automobile, a recurring motif throughout his seminal book, *The Americans*. Of his many depictions of cars, this is perhaps Frank's most iconic image, albeit one in which the car is hidden by its protective cover. The tonal values of this photograph, ranging from the shimmering white of the cover's fabric to the absolute black of the shadows, give the image an otherworldly, almost Surreal, quality.

Dave Heath's *Maquette for Contemporary Photographer*, 1963, is comprised of twenty-one prints on twelve mounts, which were provided by Heath to *Contemporary Photographer* magazine for publication in their Winter 1964 issue. Heath's layout of the photographs is meticulous, as is the sequencing, and the group gives insight into Heath's talents, not only as a photographer and printer, but as an editor and designer. In the suite offered here, Heath creates a poetic, non-linear photographic narrative that includes a number of his best-known images. This maquette, and its appearance in *Contemporary Photographer*, predates Heath's seminal first book, *A Dialogue With Solitude*, published in 1965.



Dave Heath
Maquette for Contemporary Photographer, 1963
 (Two of twenty-one illustrated)
 Estimate \$50,000 - 70,000



André Kertész
The 1974 André Kertész Guggenheim Set, 1930s
 (One of ten illustrated)
 Estimate \$40,000 - 60,000

Another unique group of prints in *World View* is the 1974 *André Kertész Guggenheim Set*, comprising ten photographs submitted by the photographer with his application for the prestigious John Simon Guggenheim Foundation Fellowship. On the strength of the images in this lot, Kertész was awarded the sum of \$15,000 in 1974. The images were all taken shortly after his 1936 arrival in New York from Paris. This early New York work shows Kertész absorbing his new surroundings and performing the photographic alchemy that was uniquely his. Further classic highlights include a solarized Man Ray portrait (illustrated page 3) from his time in Los Angeles in the 1940s, and Edward Steichen's portrait of Joan Crawford, estimated at \$20,000-30,000.

Among over forty lots on offer in this dedicated single-owner section of the auction are additional works by classic and contemporary masters alike, including three Polaroids by Helmut Newton, ranging from \$8,000-12,000 up to \$20,000-30,000 (one illustrated page 3), two prints by Robert Polidori from his *Versailles* series (one illustrated page 3), and three lots by Edward Burtynsky, who has devoted his career to documenting human impact upon the planet, including his impressively sized *Shipyard #1, Qili Port, Zhejiang Province, China*, 2014. Burtynsky approaches his subjects armed with in-depth research and then exploits photography's unique ability to capture extreme detail so that no aspect of his subject goes unrecorded. A master technician, Burtynsky produces large format prints, such as *Shipyard*, that contain more information than the human eye can process at once. Other photographers featured include Hiroshi Sugimoto, Brassai, Lisette Model, Nicholas Nixon, and many others.



Edward Burtynsky
Shipyard #1, Qili Port, Zhejiang Province, China, 2004
 Estimate \$25,000 - 35,000

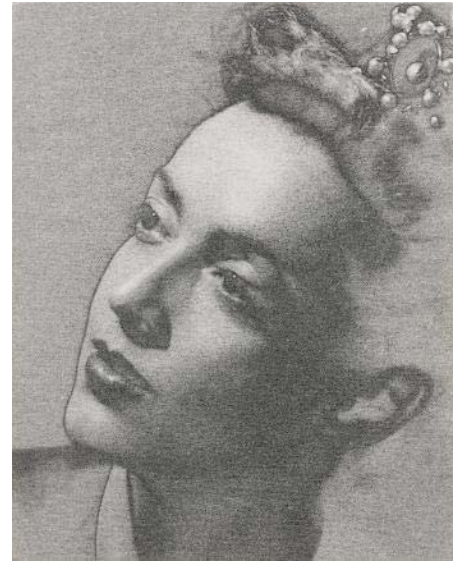
Additional Highlights



Phillipe Halsman
Marilyn Monroe, 1952
Estimate \$15,000 - 25,000



Robert Polidori
Anne Louise Bénédicte de Bourbon, Duchesse du Maine, Attributed to Francois de Troy, Salle Les Princesses Royales (86) and ANR.02.004, Salles du XVII, Aile du Nord, 1er Etage, Versailles, 1984
Estimate \$20,000 - 30,000



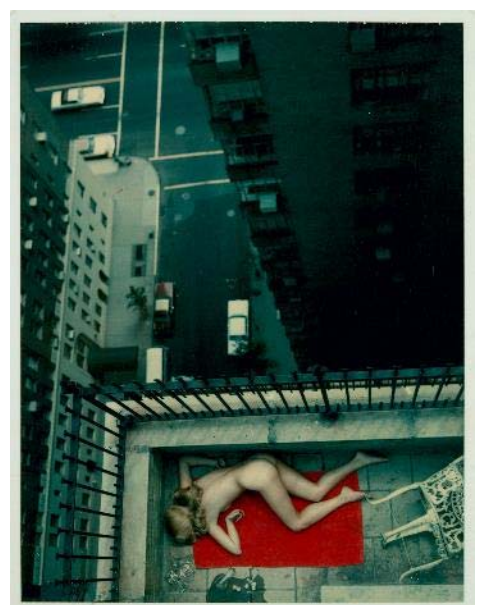
Man Ray
Portrait of a Woman, 1942
Estimate \$20,000 - 30,000



Garry Winogrand
Los Angeles, California, 1964
Estimate: \$20,000 - 30,000



Ralph Eugene Meatyard
Untitled (Flag, derelict interior with Christopher), 1960
Estimate: \$20,000 - 30,000



Helmut Newton
Central Park West, N.Y., 1976
Estimate \$20,000 - 30,000

Auction: 1 October 2019

Auction viewing: 26-30 September

Location: 450 Park Avenue, New York

Click here for more information: <https://www.phillips.com/auctions/auction/NY040319>

ABOUT PHILLIPS

Phillips is a leading global platform for buying and selling 20th and 21st century art and design. With dedicated expertise in the areas of 20th Century and Contemporary Art, Design, Photographs, Editions, Watches, and Jewelry, Phillips offers professional services and advice on all aspects of collecting. Auctions and exhibitions are held at salerooms in New York, London, Geneva, and Hong Kong, while clients are further served through representative offices based throughout Europe, the United States and Asia. Phillips also offers an online auction platform accessible anywhere in the world. In addition to providing selling and buying opportunities through auction, Phillips brokers private sales and offers assistance with appraisals, valuations, and other financial services.

Visit www.phillips.com for further information.

**Estimates do not include buyer's premium; prices achieved include the hammer price plus buyer's premium.*

PRESS CONTACT: Jaime Israni, *Senior Public Relations Manager*

[jisrani@phillips.com](mailto:jisirani@phillips.com)

+1 212 940 1398

PHILLIPS NEW YORK - 450 Park Avenue, New York, NY 10022

PHILLIPS LONDON - 30 Berkeley Square, London, W1J 6EX

PHILLIPS HONG KONG - 14/F St. George's Building, 2 Ice House Street, Central Hong Kong

VISIT US AT: www.phillips.com

FOLLOW US ON: [Twitter](#) | [Instagram](#) | [Vimeo](#) | [Facebook](#) | [Pinterest](#) | [LinkedIn](#) | [WeChat](#) (use QR Code to right)

