

# PHILLIPS

PRESS RELEASE

## Phillips Editions Department to Celebrate First Decade This Spring With Tenth-Anniversary Sale in New York

**Auction on 24 April to Include Works by  
Modern, Post-War, and Contemporary Masters**



**Robert Indiana**

*NUMBERS ONE through ZERO, 1978-2003*

Estimate: \$700,000 - \$1,000,000

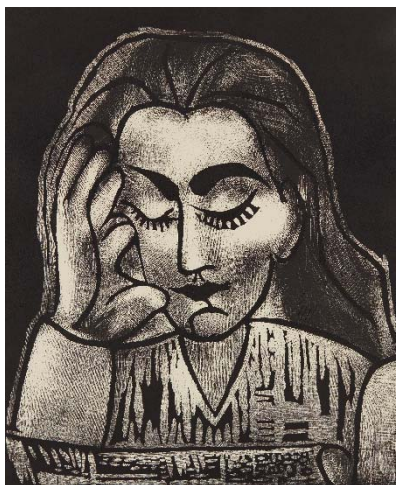
NEW YORK – 3 APRIL 2018 – On the heels of its most successful ever Editions sale in London, Phillips is proud to announce the department’s 10th anniversary auction on 24 April in New York. The Editions team was founded at Phillips in 2008 by Cary Leibowitz and Kelly Troester, who both remain at the helm today. In the 10 years since its inception, Phillips’ team has elevated the status of Editions as an artistically significant, often experimental and endlessly fascinating collecting category. The auction on 24 April will offer works by Pablo Picasso, Andy Warhol, Brice Marden, Peter Doig, David Hockney, Jackson Pollock, Sam Gilliam, Keith Haring, Joseph Beuys, and Vija Celmins, among others.

“In the past decade, we have seen tremendous growth in the market for prints and multiples,” said **Cary Leibowitz and Kelly Troester, Worldwide Co-Heads of Editions**. “Phillips has prided itself on offering fine art original editions, which are many times the direct result of collaboration between artists and their printmakers, to both aspiring collectors and connoisseurs of 20th Century and Contemporary Art. Our 10-year anniversary auction continues this tradition, offering over 400 lots that span nearly 90 years of this important collecting category.”

Philips is pleased to offer, within the auction's strong modern art section, works by Joan Miró, Marino Marini and Jean Dubuffet as well as a wide selection of more than 15 examples of Pablo Picasso's masterful work in ceramic earthenware from the famous Madoura pottery studio in Vallauris, France. This group of Picasso's ceramic works is crowned by 1953's massive and monumental *Gros oiseau corrida* (*Large Corrida Bird*), an edition of only 25 that towers above 30 inches tall (illustrated below, left). *Visage larvé* (*Hidden Face*), 1956-57 (illustrated below, right) is a rare example of Picasso's work in sterling silver, which was inspired by the artist's remark to the legendary art historian Douglas Cooper about how thrilling it would be to see his ceramic works rendered in the precious metal. The most emblematic examples of Picasso's oeuvre can be seen in the sale's graphics. For example, *Jacqueline Reading* (*Jacqueline lisant*), 1962 (illustrated below, center) exemplifies the artist's innovative work in linocut as well as his fruitful collaboration with Jacqueline, one of the artist's great loves.



Pablo Picasso  
*Gros oiseau corrida* (*Large Corrida Bird*), 1953  
 Estimate: \$80,000 - \$120,000



Pablo Picasso  
*Jacqueline lisant* (*Jacqueline Reading*), 1962  
 Estimate: \$60,000 - \$80,000



Pablo Picasso  
*Visage larvé* (*Hidden Face*), 1956-57  
 Estimate: \$60,000 - \$80,000

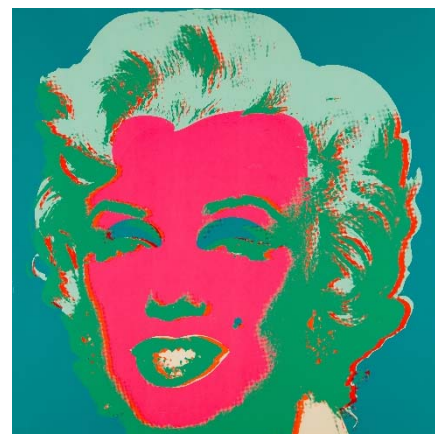
Innovative works by the most sought-after Post-War, American artists feature in both the Evening and Day sale sessions, including the complete set of Robert Indiana's *NUMBERS ONE through ZERO*, 1978-2003 (illustrated page one). In a small edition of 8, this work is among the most coveted sculptural multiples, with each piece in this version standing 18 inches tall. From 1965's iconic *11 Pop Artists Volume II* portfolio, *Reverie*, 1965, by Roy Lichtenstein (illustrated below, left) is one of the finest trophies of Post-War printmaking and a star of the Evening session. It is joined by other fine examples by the artist such as *Reflections on Crash*, 1990 (illustrated below, center), *Tel Aviv Museum Print*, 1989, and *Sunshine Through the Clouds*, 1985, amongst a number of others. Such seminal pieces of Pop Art history are joined by the most iconic face of them all in Andy Warhol's *Marilyn* of 1967 (illustrated below, right).



Roy Lichtenstein  
*Reverie*,  
 from *11 Pop Artists Volume II*, 1965  
 Estimate: \$60,000 - \$90,000



Roy Lichtenstein  
*Reflections on Crash*, from *Reflections Series*, 1990  
 Estimate \$100,000 - \$150,000



Andy Warhol  
*Marilyn*, 1967  
 Estimate: \$70,000 - \$100,000



Several works by female artists also feature strongly in this season's Editions sale. Helen Frankenthaler's *Tale of Genji III*, 1998 (illustrated right), is the artist's late-period, printmaking masterpiece — in which she made use of over 18 woodcut blocks and 53 colors — that recalls her most renowned paintings on canvas. The auction will include innovative works by Niki de Saint Phalle, Kara Walker, Jo Baer, Louise Bourgeois, Elizabeth Peyton, Susan Rothenberg and Cindy Sherman amongst others.

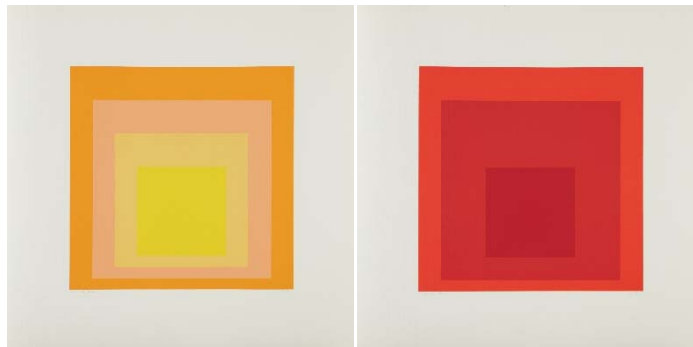


Helen Frankenthaler  
*Tales of Genji III*, 1998  
 Estimate: \$40,000 - \$60,000

Other Contemporary highlights include a collection of works by Brice Marden. Brice Marden began printmaking in the early 1960s and has been a force upon the medium ever since. Phillips is delighted to offer over 20 lots from the artist, including both individual works and large sets, which span across four decades of Marden's long and introspective career. Dating from his time as a student at Yale, to sailing trips through the Greek Isles during the 1970s, and finally to more recent times with his study of Eastern calligraphy, these works trace the artist's development into a contemporary master. *Etchings to Rexroth*, 1986 (lower left), a prolific portfolio of etchings, illustrates some of Brice Marden's most profound artistic triumphs and provides a rare and comprehensive look at its artist's pensive, inner landscape. In the exhibition leading up to the sale, Marden's works will be exhibited alongside the work of Josef Albers, presenting an interesting dichotomy, as it was Albers' influential color theory that Brice Marden rebelled against.



Brice Marden  
*Etchings to Rexroth*, 1986  
 Estimate: \$70,000 - \$100,000



Josef Albers  
*Homage to the Square: Edition Keller Ia-Ik*, 1970  
 Estimate: \$40,000 - \$60,000

Peter Doig's painterly set of twelve etchings from 2013 (illustrated below, left) encapsulates many of the various developments seen across the artist's fruitful career. David Hockney's *Moving Focus* image similarly deploys tropes that anchored the British artist's decades-long art making. Reminiscent of Hockney's early portraits, *Walking Past Two Chairs*, 1984-86 combines the informality of his *Friends* series together with the studies of perspective and landscape that are hallmark of his later career.



Peter Doig  
*Twelve Etchings*, 2013  
 Estimate: \$80,000 - \$120,000



David Hockney  
*Walking Past Two Chairs from Moving Focus Series*, 1984-86  
 Estimate: \$30,000 - \$50,000

**Auction:** Tuesday, 24 April 2018, 2pm and 6pm EDT

**Auction viewing:** 14-24 April 2018

**Location:** 450 Park Avenue

[Click here for more information.](#)

###

#### ABOUT PHILLIPS

Phillips is a leading global platform for buying and selling 20th and 21st century art and design. With dedicated expertise in the areas of 20th Century and Contemporary Art, Design, Photographs, Editions, Watches, and Jewelry, Phillips offers professional services and advice on all aspects of collecting. Auctions and exhibitions are held at salerooms in New York, London, Geneva, and Hong Kong, while clients are further served through representative offices based throughout Europe, the United States and Asia. Phillips also offers an online auction platform accessible anywhere in the world. In addition to providing selling and buying opportunities through auction, Phillips brokers private sales and offers assistance with appraisals, valuations, and other financial services.

Visit [www.phillips.com](http://www.phillips.com) for further information.

*\*Estimates do not include buyer's premium; prices achieved include the hammer price plus buyer's premium.*

PRESS CONTACT: Jaime Israni, *Senior Public Relations Specialist*

[jisrani@phillips.com](mailto:jisrani@phillips.com)

+1 212 940 1398

PHILLIPS NEW YORK - 450 Park Avenue, New York, NY 10022

PHILLIPS LONDON - 30 Berkeley Square, London W1J 6EX

PHILLIPS HONG KONG - 14/F St. George's Building, 2 Ice House Street Central Hong Kong

VISIT US AT: [www.phillips.com](http://www.phillips.com)

FOLLOW US ON: [Twitter](#) | [Instagram](#) | [Vimeo](#) | [Facebook](#) | [Pinterest](#) | [LinkedIn](#) | [WeChat](#) (use QR Code to right)

