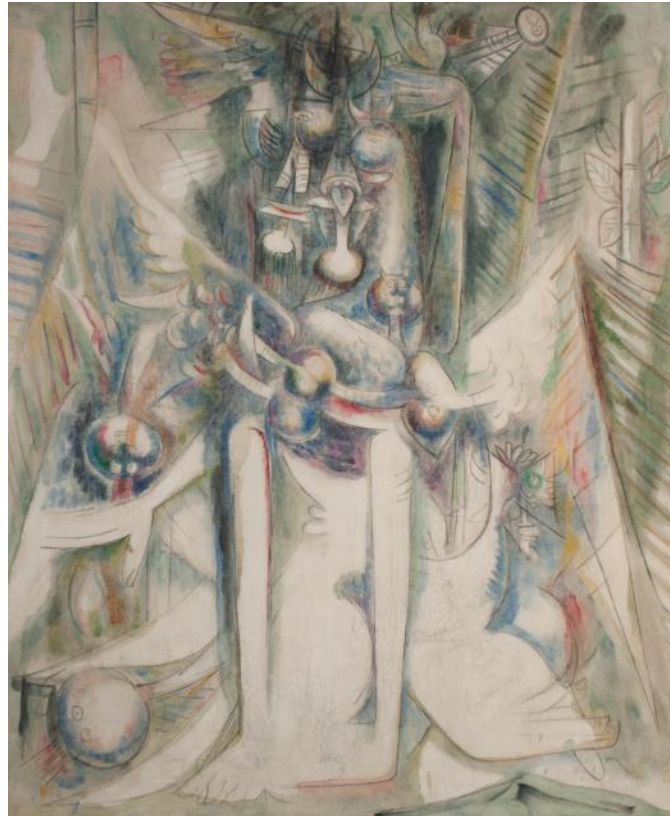


# PHILLIPS

PRESS RELEASE

## Phillips celebrates Wifredo Lam in London

**Public exhibition in October 2016 to include works from the Nader Art Museum Latin America (NAMLA) as well as Several Prestigious Private Collections**



**Wifredo Lam**, *Hermes trismegiste*, 1945

LONDON – 7 September 2016 – Phillips is pleased to announce the upcoming exhibition *Wifredo Lam: Blurring Boundaries*, which will be on view at 30 Berkeley Square from 10 to 21 October. Presenting masterworks from throughout the career of one of Cuba’s most celebrated artists, the exhibition will include significant loans from the Nader Art Museum Latin America, one of the largest and most important Latin American art collections in the world, as well as several renowned private collections. The exhibition will focus on Lam’s exploration of his lauded Afro-Cuban iconography and is the most important exhibition of Latin American art to ever take place at Phillips in Europe. *Wifredo Lam: Blurring Boundaries* coincides with the concurrent retrospective at the Tate Modern (*The EY Exhibition: Wifredo Lam*).

**Henry Allsopp, Phillips’ Worldwide Head of Latin American Art**, said, “We look forward to hosting this celebration of Wifredo Lam, one of Cuba’s most renowned painters and a pioneering figure of 20th century art. In many ways Lam was a precursor of the globalised art world in which we live today; a native Cuban with strong Latin American roots and influences, he studied in Spain and France and went on to enjoy success and popularity throughout Europe and the Americas. This public exhibition presents works from throughout his career, including many paintings which will be shown in London for the first time, and we look forward to sharing and showing them to both new and old fans of his work.”

# Wifredo Lam

Born in Cuba of mixed heritage, Wifredo Lam studied under Fernando Álvarez de Sotomayor, curator for the Museo del Prado and teacher of Salvador Dalí. While studying in Spain he met Pablo Picasso, who would become his mentor and friend, as well as one of his great supporters, introducing him to the intelligentsia of the time. Lam significantly contributed to modernism during his prolific career as painter, printmaker, sculptor, and ceramist. His works explored Cubism and expanded the inventive parameters of Surrealism while negotiating figuration and abstraction with a unique blend of Afro-Cuban and Surrealist iconography. His iconic visual language incorporated syncretic and fantastical objects and combined human-animal figures fused with lush vegetation.



Wifredo Lam, *Les Oiseaux voilés*, 1945

## Highlights from the Exhibition



Wifredo Lam, *Butinantes [Saqueadoras] [Les Saccageurs]*, 1945

From 1938-1941, while Lam was working and living in Paris, he began formulating his inventive syncretism of Cubism and Surrealism with his unique Afro-Cuban iconography. This technique especially concretized in 1942-1943, after the artist returned to Cuba, when he painted his iconic masterpiece *The Jungle*, which is now part of the permanent collection of the Museum of Modern Art in New York. *Hermes Trismegiste* (illustrated page 1) is among the most significant works in this exhibition and, along with *Le nid fascine* (illustrated below, left) and *Les Oiseaux Voilés* (illustrated above), exemplifies this pivotal period within his oeuvre.

*Here on Earth* (illustrated page 3, top left) and *Idoli* (illustrated below, right) are important examples of Lam's cubist-derived metamorphosed figural compositions. When these works were executed, in the 1950s, Lam started receiving a great deal of critical attention internationally, exhibiting extensively in Europe and the United States.



Wifredo Lam, *Le Nid fascine*, 1944



Wifredo Lam, *Idoli*, 1955



Wifredo Lam, *Here on Earth*, 1955

By the 1960s, Lam continued to develop his figures, including the iconic *femme-cheval*, in a more geometric and stylized vocabulary, clearly evident in *La Sposa* (illustrated below, left) and the 1972 painting *Le Portrait d'un inconnu* (illustrated below, right). During this time he was living between Albissola, Milan and Paris and traveling extensively to India, Burma, Kenya, and Egypt. It was also during this time that Lam started expanding and producing art in other mediums, including sculpture and ceramics.



Wifredo Lam, *La Sposa*, 1962



Wifredo Lam, *Le Portrait d'un inconnu*, 1972

**Exhibition** 10-21 October | Monday to Saturday 10am-6pm, Sunday 12pm-6pm  
**Location:** 30 Berkeley Square, London

#### ABOUT PHILLIPS

Phillips is a leading global platform for buying and selling 20th and 21st century art and design. With dedicated expertise in the areas of Art, Design, Photographs, Editions, Watches, and Jewelry, Phillips offers professional services and advice on all aspects of collecting. Auctions and exhibitions are held at salerooms in New York, London, Geneva, and Hong Kong, while clients are further served through representative offices based throughout Europe, the United States and Asia. Phillips also offers an online auction platform accessible anywhere in the world, and is committed to supporting contemporary arts and culture through a worldwide programme of Arts Partnerships. Visit [www.phillips.com](http://www.phillips.com) for further information.

#### ABOUT NAMLA

Nader Art Museum Latin America (NAMLA) is one of the most important venues in North America. The museum is dedicated to showcasing a myriad of acclaimed art that fosters knowledge through a continuous process of appreciation and reinterpretation of modern and contemporary art from Latin American and its diaspora. Through a permanent collection of paintings, drawings, sculptures, photography, installations and other media, the museum's audience can experience and appreciate what is considered to be one of the world's most significant regions of today's Contemporary art scene. The museum's collection originates from Gary's private collection, which he has amassed throughout his career as a gallerist. The collection features pieces from acclaimed masters of art, including: Acosta Leon, Alfonso, Atchugarry, Bedia, Bermudez, Botero, Bravo, Carreño, Cruz-Diez, de Szyzlo, Di Cavalcanti, Figari, Guayasamin, Kuitca, Lam, Larraz, Matta, Mendive, Milhazes, Morales, Muñiz, Muñoz Vera, Negret, Pelaez, Pettoruti, Ponce de Leon, Portinari, Portocarrero, Rivera, Segui, Soto, Tamayo, Torres Garcia, Zarraga, and many more. Nader Art Museum Latin America's interim space is located at 62 NE 27th St, Miami, FL 33137. For more information, please visit: [www.namla.us](http://www.namla.us) or contact [info@namla.us](mailto:info@namla.us)

PRESS CONTACTS:

Katie Carder, *Press Manager, EMEA*

[kcarder@phillips.com](mailto:kcarder@phillips.com)

+44 20 7901 7938

HEADQUARTERS: *LONDON* - 30 Berkeley Square, London W1J 6EX | *NEW YORK* - 450 Park Avenue, New York, NY 10022

VISIT US AT: [www.phillips.com](http://www.phillips.com)

FOLLOW US ON: [Twitter](#) | [Instagram](#) | [Vimeo](#) | [Facebook](#) | [Pinterest](#) | [Tumblr](#) | [LinkedIn](#)