

## Phillips Announces Highlights from June Evening & Day Editions Sale

**Auctions to Feature Modern & Contemporary Prints and Multiples by Pablo Picasso, Andy Warhol, Lee Ufan, Damien Hirst and Tony Cragg**

**Also Presenting a Print-Making Workshop with Artist Rose Blake and Worton Hall Studios**



**Andy Warhol** *Queen Elizabeth II of the United Kingdom, from Reigning Queens*, 1985  
Estimate £30,000 - 50,000

**EVENING AUCTION:** 6 JUNE 2016, 6PM lots 1-70 / **DAY AUCTION:** 6 JUNE 2016, 2PM lots 71-245

**AUCTION LOCATION:** 30 BERKELEY SQUARE, LONDON W1J 6EX

**VIEWING:** 3-9 June | Monday to Saturday 10am-6pm, Sunday 12pm-6pm

**LINK TO ONLINE CATALOGUE:** <http://phillips.com/auctions/auction/UK030216>

LONDON - 25 May 2016 - Phillips Evening and Day Editions auctions in London will present a strong offering of museum-quality original prints and multiples by celebrated masters of the 20th and 21st centuries. The two auctions will include over 240 lots, carrying a pre-sale estimate of £1.6 to £2.4 million, and showcasing works by **Pablo Picasso**, **Marc Chagall**, **Andy Warhol**, **Roy Lichtenstein**, **Lee Ufan**, **Sigmar Polke**, **Damien Hirst**, **Julian Opie** and **Tony Cragg**.

An iconic selection of screenprints by **Andy Warhol** are amongst the top lots in the Evening portion of the auction, including several unique works: *The Scream (after Munch)* (acquired directly from the artist's studio in 1987), *Shadows V*, and *Apple*, from *Ads* - as well as a group of familiar faces: *Marilyn*, *Mick Jagger* (currently the subject of the *Exhibitionism: The Rolling Stones* exhibition at Saatchi Gallery, London), *Lenin*, and *Queen Elizabeth II*, who is gracing the front cover of the auction catalogue in the year of her 90<sup>th</sup> birthday.

A charming and witty group of ceramics by **Pablo Picasso** opens the Modern section of the Evening auction, followed by two of the most iconic works from his famous 1930s *Vollard Suite*: *Minotaure aveugle guidé par Marie-Thérèse au pigeon dans une nuit étoilée* and *Faune dévoilant une Femme*. These two etchings demonstrate Picasso's superlative talent as a printmaker, specifically the technique of sugar-lift aquatint that he perfected under the tutelage of master printer Roger Lacourière. Their compositions exemplify the intense symbolism and mythical power of *The Vollard Suite*, casting the artist himself as both Faun and Minotaur alongside instantly recognizable portraits of Picasso's young lover, *Marie-Thérèse Walter*.

Other important highlights include a portfolio of drypoint etchings and a carborundum print by the Korean minimalist artist, **Lee Ufan** (neither of which have been offered at auction before), **Tony Cragg's** *Grenze weg*, produced to celebrate the 25<sup>th</sup> anniversary of German reunification, and **Damien Hirst's** *All You Need is Love, Love, Love*, which is being sold to benefit the National Autistic Society.



WORTON HALL STUDIOS  
CORIANDER STUDIO THE CURWEN STUDIO HUGUENOT EDITIONS

Phillips is also proud to offer an all-day print-making workshop on Saturday June 4<sup>th</sup> in collaboration with artist **Rose Blake** and **Worton Hall Studios**. Coinciding with the public preview of our June 9<sup>th</sup> Editions auctions, the print-making demonstration will continue throughout the day - with an opportunity for guests to make their own screenprint, and a Q&A with the artist.



**Pablo Picasso**  
*Chouette (Owl)*, 1968  
Estimate £8,000 - 10,000



**Pablo Picasso**  
*Chouette (Owl)*, 1968  
Estimate £8,000 - 10,000

PROPERTY FROM AN IMPORTANT JAPANESE COLLECTION



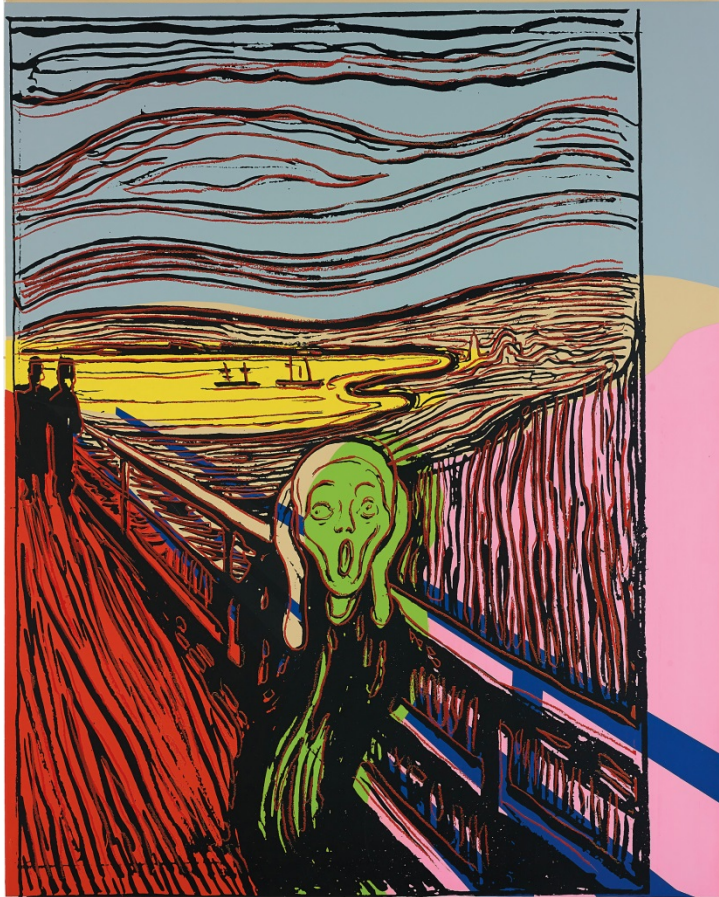
**Pablo Picasso**  
*Minotaure aveugle guidé par Marie-Thérèse au pigeon dans une nuit étoilée (Blind Minotaur Guided Through a Starry Night by Marie-Thérèse with a Dove)*, plate 97, from *La Suite Vollard*, 1934  
Estimate £50,000 - 70,000



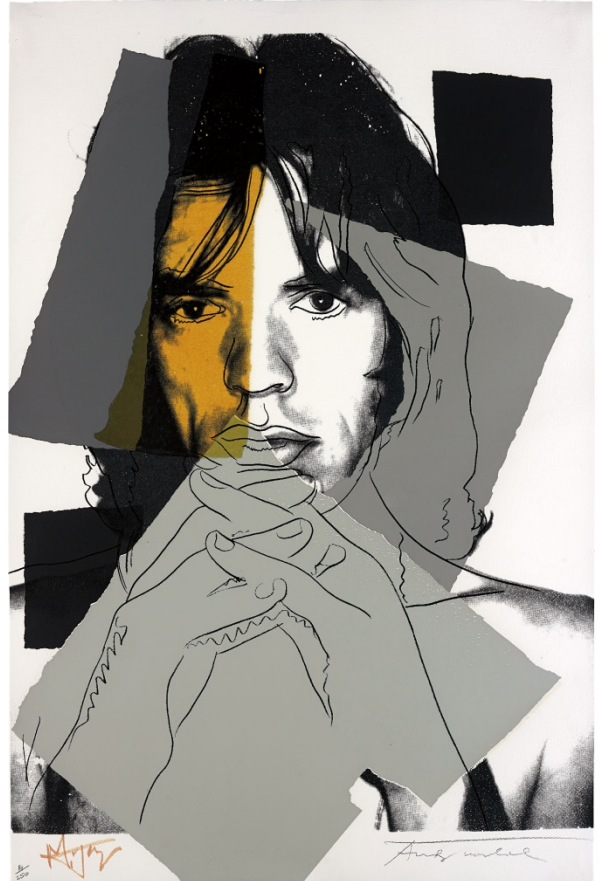
**Pablo Picasso**  
*Faune dévoilant une Femme (Faun Revealing a Woman)*, plate 27, from *La Suite Vollard*, 1936  
Estimate £40,000 - 60,000



PROPERTY FROM A PRIVATE EUROPEAN COLLECTION



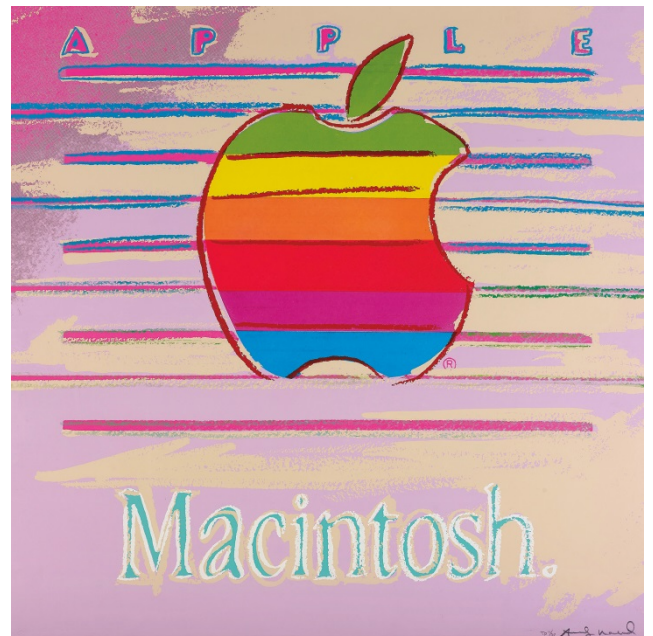
**Andy Warhol**  
*The Scream (after Munch)*, 1984  
Estimate £150,000 - 250,000



**Andy Warhol**  
*Mick Jagger*, 1975  
Estimate £25,000 - 35,000



**Andy Warhol**  
*Shadows V*, 1979  
Estimate £60,000 - 80,000



**Andy Warhol**  
*Apple, from Ads*, 1985  
Estimate £50,000 - 70,000





**Lee Ufan**  
*To the Ruins*, 1986  
 Estimate £10,000 - 15,000



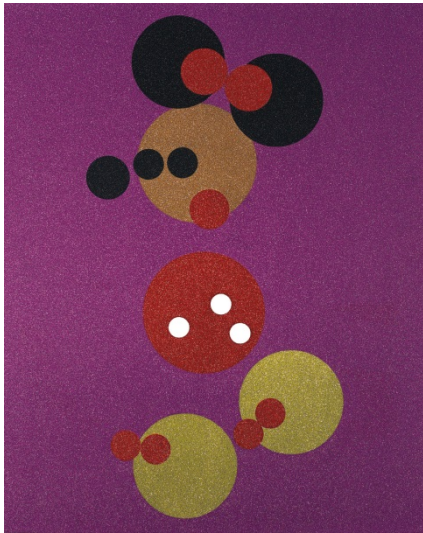
**Sigmar Polke**  
*Freundinnen I (Girlfriends I)*, 1967  
 Estimate £10,000 - 15,000



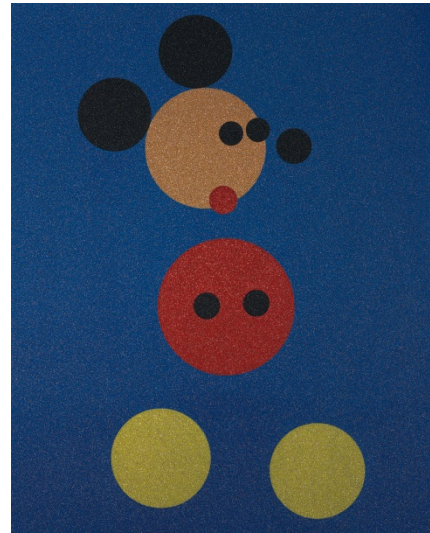
**Lee Ufan**  
*Untitled, from Dialogue*, 2007  
 Estimate £7,000 - 10,000



**Tony Cragg**  
*Grenze weg*, 2015  
 Estimate £30,000 - 50,000



**Damien Hirst**  
*Minnie (Pink Glitter), 2016*  
 Estimate £8,000 - 12,000



**Damien Hirst**  
*Mickey (Blue Glitter), 2016*  
 Estimate £8,000 - 12,000



**Damien Hirst**  
*All You Need Is Love, Love, Love, 2008*  
 Estimate £10,000 - 15,000

**Auction:** Thursday, 9 June, 2pm & 6pm BST

**Auction viewing:** 3-9 June | Monday to Saturday 10am-6pm, Sunday 12pm-6pm

**Location:** 30 Berkeley Square, London

**Link to more information:** <http://www.phillips.com/auctions/auction/UK030216>

#### ABOUT PHILLIPS

Phillips is a leading global platform for buying and selling 20<sup>th</sup> and 21<sup>st</sup> Century art and design. With dedicated expertise in the areas of Art, Design, Photographs, Editions, Watches, and Jewelry, Phillips offers professional services and advice on all aspects of collecting. Auctions and exhibitions are held at salerooms in New York, London, Geneva, and Hong Kong, while clients are further served through representative offices based throughout Europe, the United States and Asia. Phillips also offers an online auction platform accessible anywhere in the world.

*\*Estimates do not include buyer's premium; prices achieved include the hammer price plus buyer's premium.*

#### PRESS CONTACTS:

NEW YORK - Michael Sherman, *Chief Communications Officer*

[msherman@phillips.com](mailto:msherman@phillips.com) +1 212 940 1384

LONDON - Matthew Paton, *Consultant*

[matthew@patonarts.com](mailto:matthew@patonarts.com) +44 (0)7711 112425

**HEADQUARTERS:** LONDON - 30 Berkeley Square, London W1J 6EX | NEW YORK - 450 Park Avenue, New York, NY 10022

**VISIT US AT:** [www.phillips.com](http://www.phillips.com)

**FOLLOW US ON:** [Twitter](#) | [Instagram](#) | [Vimeo](#) | [Facebook](#) | [Pinterest](#) | [Tumblr](#) | [LinkedIn](#)