

# PHILLIPS

PRESS RELEASE

## Phillips April Auction of Photographs to Feature Works Spanning 130 Years

Prominent Private Collections to be Offered,  
Including Property from the Private Collection of Rita Krauss, Palm Beach

Auction to feature exceptional works from the Düsseldorf Art Academy



Andreas Gursky  
*Athens, 1995*  
Estimate: \$250,000-350,000

NEW YORK - 17 MARCH 2016 - On 4 April, Phillips will present its first *Photographs* auction of 2016, featuring 264 lots that span the history of the medium. Among the top lots are works by contemporary masters, Andreas Gursky, Richard Prince and Andres Serrano, balanced by a beautiful selection of prints by Walker Evans and other photographic legends, such as Robert Frank and Diane Arbus.

“This sale brings together remarkable examples from over 130 years of photographic practice from acclaimed photographers around the globe. Specifically, we are thrilled to bring to the market an exceptional selection of photographs by Düsseldorf Art Academy alumni, including Andreas Gursky, Thomas Struth, Thomas Ruff and Elger Esser,” said Sarah Krueger, Phillips Head of Sale for Photographs in New York.

Leading the sale is Andreas Gursky’s striking diptych, *Athens, 1995* (illustrated above). These monumental color

photographs are a prime example of the artist's conceptually rigorous interweaving of micro details into a macro structure. Now lauded as one of the greatest contemporary European photographers, Gursky was once a student of Bernd and Hilla Becher where, at the Düsseldorf Art Academy, he and his peers became the first generation of students to receive acclaim in the international arena of contemporary art.

Additional exceptional works by Düsseldorf alumni include Thomas Struth's *Kunsthistorisches Museum Wien II*, 1989 (illustrated page 4), Thomas Ruff's *Jpeg NY06*, 2004 which will be offered for \$80,000- 120,000, and Elger Esser's *Drôme, Frankreich*, 1998, on offer for \$40,000-60,000, among other examples from this prestigious school of photography.

Artistic interpretations of the American West are seen in highlights by Richard Prince and Richard Avedon. Remarkably bold in composition and appropriative in artistic gesture, Prince's *Untitled (Cowboy)*, 1993 (illustrated right) rides across the silhouetted plain, lasso in one hand, reigns in the other, a herd of wild



Richard Prince, *Untitled (Cowboy)*, 1993, Estimate: \$200,000-300,000



Richard Avedon, *Peggy Daniels, cashier, Giddings, TX, May 7, 1981*, Estimate: \$80,000-120,000

mustangs galloping behind, exuding the romantic promise of freedom and the rustic glamour associated with the western landscape. Further, *Peggy Daniels, cashier, Giddings, TX, May 7, 1981* (illustrated left), is a key work from Richard Avedon's five-year project documenting everyday people living west of the Mississippi River in all walks of life. Taken in May of 1981, at the height of Giddings's transformation into a bustling industrial center, Peggy Daniels embodies the success of the region, presenting herself as proud and assertive.

Also by Richard Avedon is his August 15, 1967 iconic portrait of the Beatles, (illustrated below), one of seven works by the artist included in the sale. Gifted from Avedon to Nat Weiss, the Beatles' lawyer, merchandising manager in the United States, and early promoter of their music, the print on offer is believed to be the earliest print of the image in this format. It is exceptionally rare to the market with a unique provenance that beautifully ties together the photographer and his subject.



Richard Avedon, *The Beatles*, 1967, Estimate: \$120,000-180,000

Further adding to the contemporary highlights is Andres Serrano's polarizing *Piss Christ*, 1987 (illustrated right) which exemplifies the artist's challenge of the sacred, and subsequent exploration of his own relationship with the complex ideologies of contemporary culture. Additional contemporary works on offer include works from the most well-known series by the master of photographic illusion, Vik Muniz, including *Red, Orange, Orange on Red, after Mark Rothko* from *Pictures of Pigment* (illustrated page 4) and *Audrey Hepburn* from *Pictures of Diamonds*, 2005, estimated at \$50,000-70,000. From Robert Frank's *Inauguration Day (Pennsylvania Avenue, Washington, D.C.)*, 1957, to Diane Arbus' lifetime print, *Miss Venice Beach, Cal.*, 1962, both estimated at \$30,000-50,000, and Lewis Baltz's *Nevada* portfolio, that epitomizes the New Topography movement of the 1970's, on offer for \$50,000-70,000, additional classic works are equally well-represented.



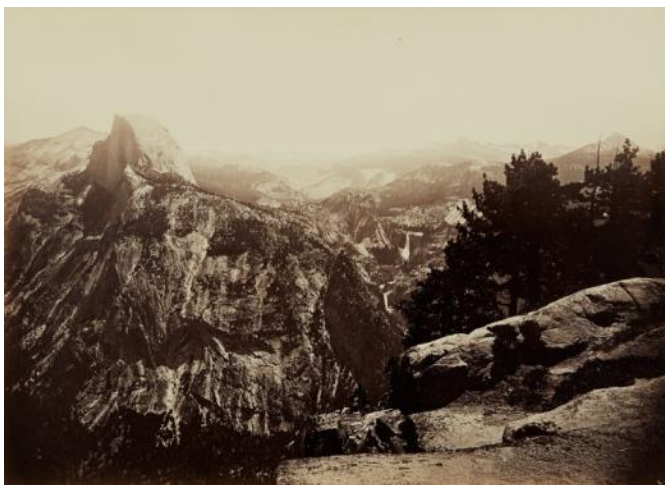
Andres Serrano, *Piss Christ*, 1987  
Estimate: \$60,000-80,000

### WORKS FROM PROMINENT PRIVATE COLLECTIONS

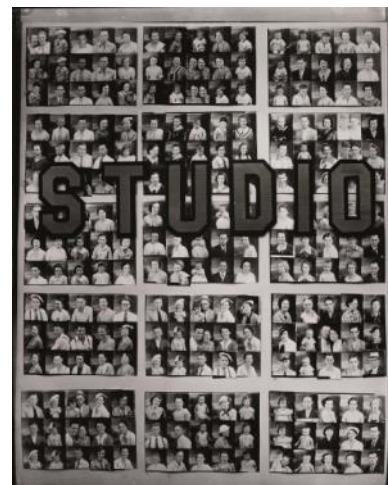
Several esteemed collections also figure prominently in the sale, including twenty lots from the Private Collection of Rita Krauss, a visionary who as both a private dealer and collector has been active in the market since the early 1980's, notably as an early supporter of Cindy Sherman and Vik Muniz. Highlights from her collection include Muniz's *The Absinthe Drinker, After Edgar Degas* from *Pictures of Magazines II*, 2011, estimated at \$70,000- 90,000, and Laurie Simmons' *Walking Camera (Jimmy the Camera)*, 1987, at \$30,000-40,000.

Also included in the sale are Photographs from a Private East Coast Collection, featuring a selection of works by leading photographers such as Man Ray whose *Profile Study of a Woman*, 1928, on offer for \$25,000-35,000 was used as an advertisement for his Paris portrait studio in 1935. Additional works from this distinguished collection include prints by Dorothea Lange, Lisette Model and Carleton Watkins, whose *The Half Dome, Vernal and Nevada Falls, from Glacier Point Yosemite*, 1878-1881 (illustrated below, left), originates from the Gordon L. Bennett Collection.

Lastly, a group of eight prints by Walker Evans will be available at auction after residing in the same private collection for forty years. These works, including *Penny Picture Display, Savannah, Georgia*, 1936 (illustrated below, right), and *Sidewalk and Shopfront, New Orleans*, 1935, estimated at \$10,000- 15,000, demonstrate Evans' incredible skill in transforming vernacular scenes into enduring works of art.



Carleton Watkins  
*The Half Dome, Vernal and Nevada Falls, from Glacier Point Yosemite*, 1878-1881,  
Estimate: \$20,000-30,000



Walker Evans  
*Penny Picture Display, Savannah, Georgia*, 1936  
Estimate: \$25,000-35,000

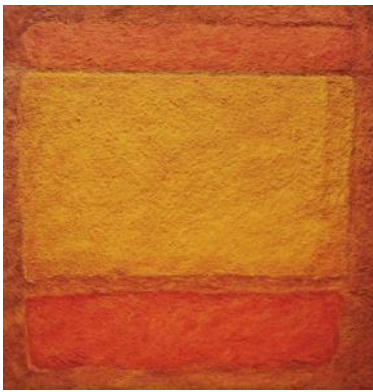
## ADDITIONAL HIGHLIGHTS



**Philip-Lorca diCorcia**  
*Eddie Anderson, 21 years old, Houston, Texas, \$20, 1990-1992*  
Estimate: \$40,000-60,000



**Thomas Struth**  
*Kunsthistorisches Museum Wien II, 1989*  
Estimate: \$100,000-150,000



**Vik Muniz**  
*Red, Orange, Orange on Red, after Mark Rothko*  
from *Pictures on Pigment*, 2008  
Estimate: \$60,000-80,000



**Robert Frank**  
*Inauguration Day (Pennsylvania Avenue, Washington, D.C.), 1957*  
Estimate: \$30,000-50,000

**Auction:** Monday, 4 April 2016, 10am & 2pm EDT

**Auction viewing:** 26 March - 3 April | Monday to Saturday 10am-6pm, Sunday 12pm-6pm

**Location:** 450 Park Avenue, New York

**Link to more information:** <https://www.phillips.com/auctions/auction/NY040116>

###

### ABOUT PHILLIPS

Phillips is a leading global platform for buying and selling 20<sup>th</sup> and 21<sup>st</sup> Century art and design. With dedicated expertise in the areas of Art, Design, Photographs, Editions, Watches, and Jewelry, Phillips offers professional services and advice on all aspects of collecting. Auctions and exhibitions are held at salerooms in New York, London, Geneva, and Hong Kong, while clients are further served through representative offices based throughout Europe, the United States and Asia. Phillips also offers an online auction platform accessible anywhere in the world.

*\*Estimates do not include buyer's premium; prices achieved include the hammer price plus buyer's premium.*

**PRESS CONTACTS:** NEW YORK - Michael Sherman, *Chief Communications Officer* [MSherman@phillips.com](mailto:MSherman@phillips.com) +1 212 940 1384  
LONDON - Matthew Paton, *Consultant* [Matthew@patonarts.com](mailto:Matthew@patonarts.com) +44 (0)7711 112425

**HEADQUARTERS:** LONDON - 30 Berkeley Square, London W1J 6EX | NEW YORK - 450 Park Avenue, New York, NY 10022

**VISIT US AT:** [www.phillips.com](http://www.phillips.com)

**FOLLOW US ON:** [Twitter](#) | [Instagram](#) | [Vimeo](#) | [Facebook](#) | [Pinterest](#) | [Tumblr](#) | [LinkedIn](#)