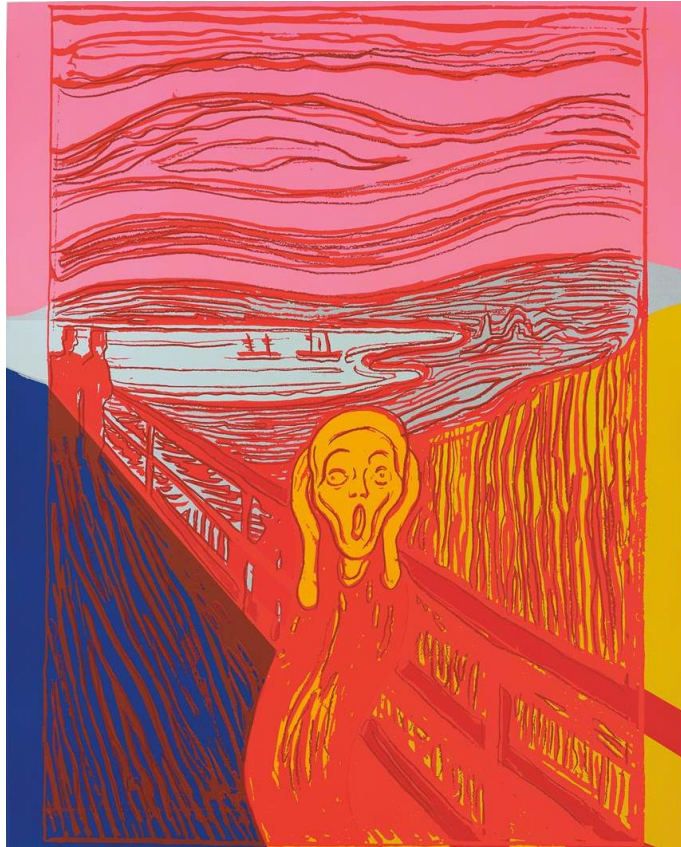


# PHILLIPS

PRESS RELEASE

## PHILLIPS ANNOUNCES HIGHLIGHTS FROM JANUARY EVENING & DAY EDITIONS AUCTIONS

AUCTIONS TO FEATURE PRINTS AND MULTIPLES BY ANDY WARHOL, ROY LICHTENSTEIN,  
PABLO PICASSO AND LOUISE BOURGEOIS



PROPERTY FROM AN IMPORTANT EUROPEAN COLLECTION  
ANDY WARHOL

*The Scream (after Munch)*, 1984  
Estimate £150,000 - 200,000

**EVENING AUCTION:** 21 JANUARY 2016, 6PM

**DAY AUCTION:** 21 JANUARY 2016, 2PM

**AUCTION LOCATION:** 30 BERKELEY SQUARE, LONDON W1J 6EX

**VIEWING:** 15-21 JANUARY 2016, 30 BERKELEY SQUARE, LONDON W1J 6EX

**LINK TO ONLINE CATALOGUE:** <http://phillips.com/auctions/auction/UK030116>

LONDON – 14 JANUARY 2016 – Phillips Evening and Day Editions auctions in London will present a selection of works by celebrated artists of the 20<sup>th</sup> and 21<sup>st</sup> centuries. The two auctions will include over 260 lots, carrying a pre-sale estimate of £ 2.2 to £3.2 million.

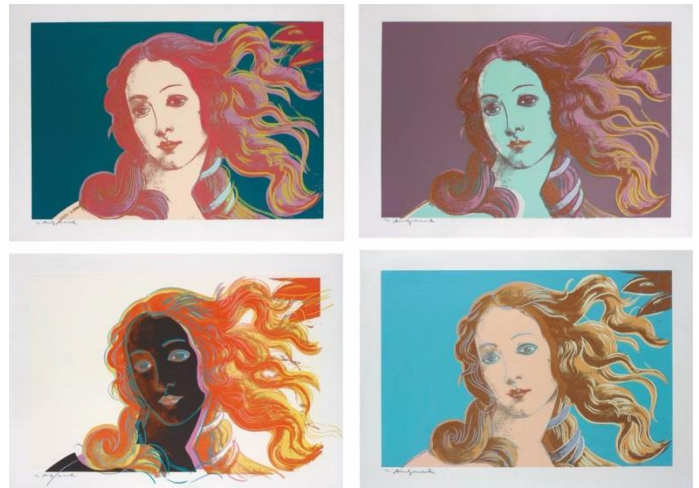
Editions' strong offering include prints and multiples by **Damien Hirst**, **Jeff Koons**, **Lucien Freud**, **Pablo Picasso**, **Francis Bacon**, **Julian Opie**, **Georges Braque**, **Günther Förg** and **Louise Bourgeois**.

With a heavy offering of *Pop Art* and *Classic Modernism*, prints and multiples by **Andy Warhol**, **Roy Lichtenstein**, **Francis Bacon**, **Pablo Picasso** and **Marc Chagall** are amongst the top lots in the Evening portion of the auction. The iconic styles of **Roy Lichtenstein** and **Andy Warhol**, who ordinarily focus on contemporary, everyday imagery (including advertisements, comics, celebrities, and soup-cans), both repeatedly turned their attention to art history. From the late 1960s, **Lichtenstein** began exploring classical motifs, with the defining elements of *Futurism*, *Cubism*, *Surrealism*, and finally *Expressionism* featuring regularly in his work throughout the following decades. Similarly, in the 1980s, **Warhol** transformed singular historical works of art (or rather, their reproductions) into recognisably Warholian icons, with his versions of works by Lucas Cranach, Giorgio de Chirico, and Edvard Munch, along with his Details of Renaissance Paintings series, forming the backbone of **Warhol's** last, busy decade.

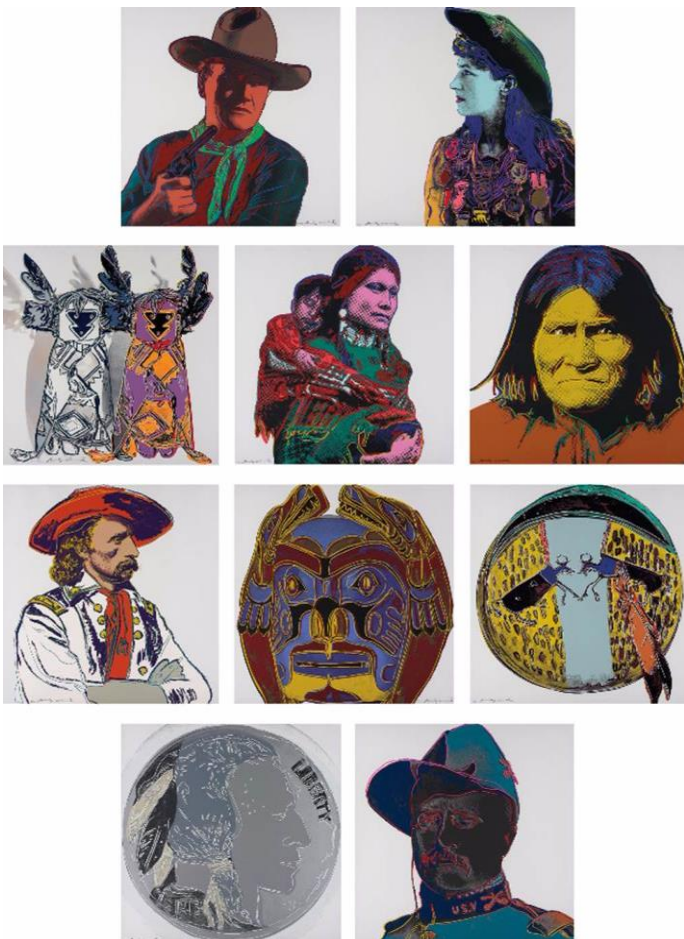
**Lichtenstein** and **Warhol's** focus on repetition and seriality, of continuing (through parody) a series of familiar images, is key to both artists' exploration of art history.



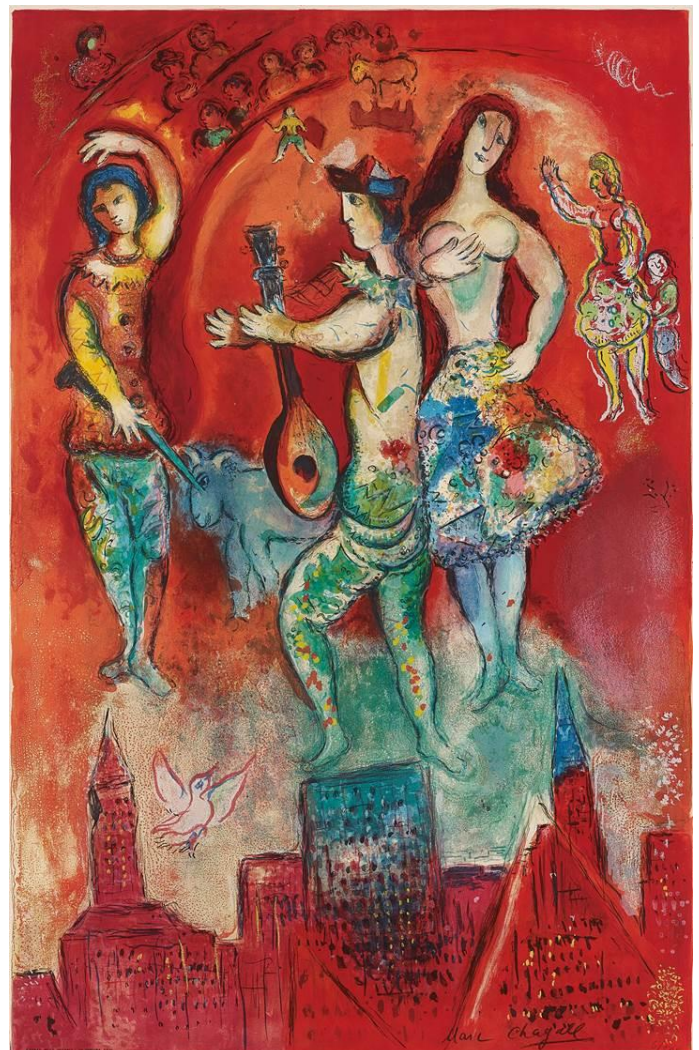
**ANDY WARHOL**  
*\$ (Quadrant)*, 1982  
 Estimate £100,000 - 150,000



**ANDY WARHOL**  
*Details of Renaissance Paintings*  
 (Sandro Botticelli, *Birth of Venus* 1482), 1984  
 Estimate £120,000 - 180,000



**ANDY WARHOL**  
*Cowboys and Indians*, 1986  
 Estimate £120,000 - 180,000



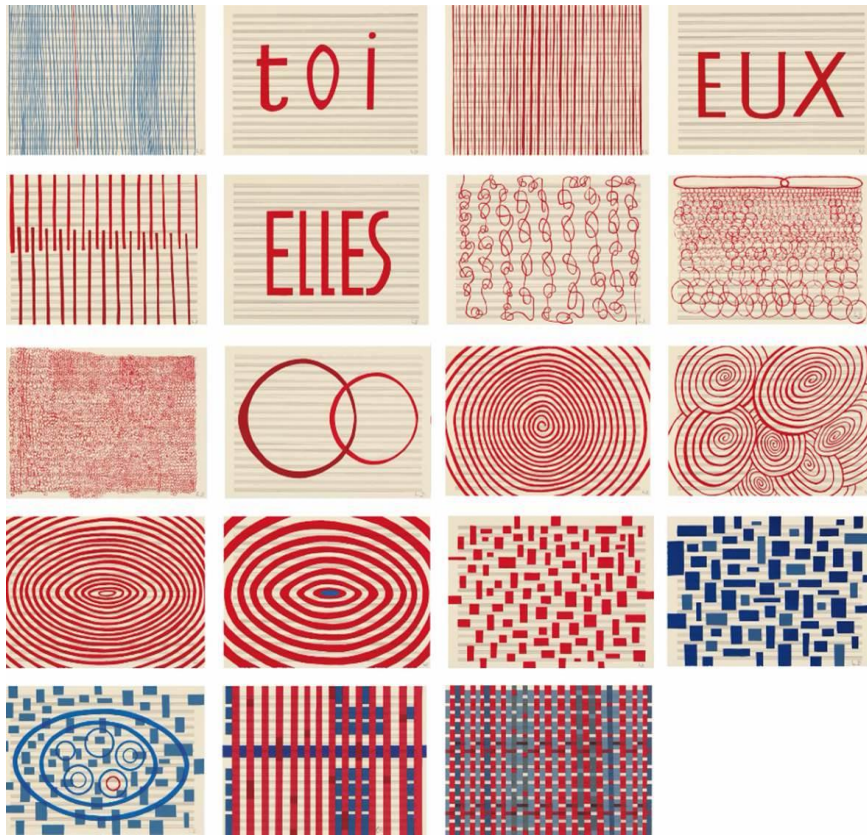
PROPERTY FROM A PRIVATE SWEDISH COLLECTION  
 AFTER MARC CHAGALL  
*Carmen* by Charles Sorlier, 1966  
 Estimate £25,000 - 35,000



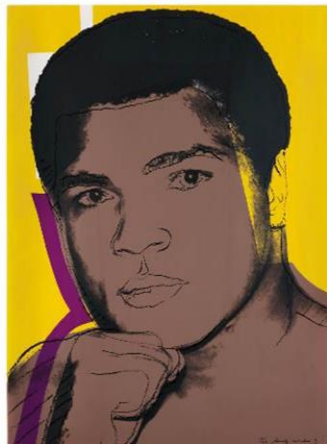
PROPERTY FROM A DISTINGUISHED PRIVATE EUROPEAN  
COLLECTION  
**ROY LICHTENSTEIN**  
*Expressionist Woodcut Series*, 1980  
Estimate £80,000 - 120,000



**ROY LICHTENSTEIN**  
*Reflections on The Scream, from Reflections series*, 1990  
Estimate £70,000 - 90,000



**LOUISE BOURGEOIS**  
*Fugue*, 2003-05  
Estimate £40,000 - 60,000



**ANDY WARHOL**  
*Muhammad Ali*, 1978  
Estimate £50,000 - 70,000



**JOAN MIRÓ**  
*Femmes (Women)*, 1965  
Estimate £15,000 - 20,000



**PABLO PICASSO**  
*Bacchanale*, 1959  
Estimate £35,000 - 45,000



**WASSILY KANDINSKY**  
*Radierung No. 1 (Etching No. 1)*, 1916  
Estimate £10,000 - 15,000

Phillips is a leading global platform for buying and selling 20th and 21st Century art and design. With dedicated expertise in the areas of Art, Design, Photographs, Editions, Watches, and Jewelry, Phillips offers professional services and advice on all aspects of collecting. Auctions and exhibitions are held at salerooms in New York, London and Geneva, while clients are further served through representative offices based throughout Europe, the United States and Asia. Phillips also offers an online auction platform accessible anywhere in the world.

*\*Estimates do not include buyer's premium; prices achieved include the hammer price plus buyer's premium.*

VISIT US AT [WWW.PHILLIPS.COM](http://WWW.PHILLIPS.COM)

Follow us on [Twitter](#) [Instagram](#) [Vimeo](#) [Facebook](#) [Pinterest](#) [Tumblr](#) [LinkedIn](#)

Contacts:

**LONDON**

Alex Godwin-Brown  
Head of Press, Europe  
[agodwin-brown@phillips.com](mailto:agodwin-brown@phillips.com)  
+ 44 20 7318 4036

**NEW YORK**

Michael Sherman  
Chief Communications and Public Relations Officer  
[msherman@phillips.com](mailto:msherman@phillips.com)  
+1 212 940 1384

**HEADQUARTERS**

450 Park Avenue  
New York NY 10022  
+1 212 940 1200

30 Berkeley Square  
London W1J 6EX  
+44 20 7318 4010