

PHILLIPS

PRESS RELEASE

PHILLIPS ANNOUNCES HIGHLIGHTS FROM ITS NEW YORK FALL AUCTION OF PHOTOGRAPHS FROM THE COLLECTION OF THE ART INSTITUTE OF CHICAGO

WORKS BY HENRI CARTIER-BRESSON, IRVING PENN, EDWARD WESTON, LEWIS WICKES HINE, ROBERT HEINECKEN, ANSEL ADAMS, ANDRÉ KERTÉSZ, WALKER EVANS AND ROBERT FRANK LEAD SALE OF IMPORTANT PHOTOGRAPHS

AUCTION: 1 October 2014, 10AM

VIEWING: 20-30 September, 450 Park Avenue, New York, NY 10022

AUCTION LOCATION: 450 Park Avenue, New York, NY 10022

FOR IMMEDIATE RELEASE

NEW YORK - 15 August 2014 - Phillips is delighted to launch its Fall Photographs season with selections from The Art Institute of Chicago's renowned collection that include superb works by many of the leading classic photographers. The Auction features 117 lots with a combined pre-sale low estimate of \$1,148,200/ £688,085 / €857,154 and a pre-sale high estimate of \$1,659,800/ £994,672 / €1,239,073.

"The sale of Photographs from the Collection of The Art Institute of Chicago presents a once-in-a-lifetime opportunity for collectors to purchase a work with a most desirable provenance. The breadth and caliber of the collection is as much a celebration of the medium as it is of the Art Institute's vision in building one of the foremost institutional collections of photography in the world." **Vanessa Kramer Hallett, Worldwide Head of Photographs and Senior Director, Photographs.**

"This auction represents the first sale of deaccessioned photographs from the Art Institute of Chicago since collecting began at the museum 65 years ago. It is the result of years of careful review, and the proceeds will go exclusively to furthering acquisitions in photography. The choices on offer here point to the terrific history of the museum's longstanding photography program and will help make possible its future successes." **Matthew S. Witkovsky, Richard and Ellen Sandor Chair and Curator of the Department of Photography.**

At the helm of the collection is **Henri Cartier-Bresson's** rare and early print of *Córdoba, Spain*, 1933, estimated at \$80,000-120,000. Originally from the famed Julien Levy Collection in New York, this charming image captures Cartier-Bresson's early Surrealist sensibilities, depicting the unexpected juxtaposition of two women, one older and real, the other youthful and made of paper. The image was taken the same year Levy held a show for the budding French photographer, and this print, trimmed and mounted, was almost certainly included in the show. It is one of only a handful of early surrealist prints by Cartier-Bresson to ever be offered at auction. Other outstanding



HENRI CARTIER-BRESSON

Córdoba, Spain, 1933
EST \$80,000-120,000



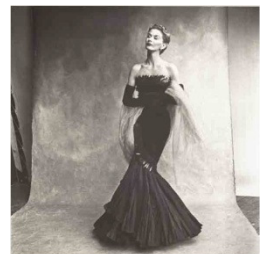
EDWARD WESTON

Dunes, Oceano, 1936
EST \$70,000-90,000



LEWIS WICKES HINE

Sadie, a Cotton Mill Spinner, Lancaster, South Carolina, 1908
EST \$60,000-80,000



IRVING PENN

Mermaid Dress (Rochas), Lisa Fonssagrives-Penn, 1950
EST \$80,000-120,000

photographs in the Art Institute's collection include two works by **Edward Weston**: an awe-inspiring vista of *Dunes, Oceano*, 1936, estimated at \$70,000-90,000, printed no later than 1951 and depicting a favored landscape of the artist, and the majestic *Nude*, 1936, estimated at \$40,000-60,000, printed circa 1953 by Brett Weston; **Irving Penn's** timelessly elegant *Mermaid Dress (Rochas)*, *Lisa Fonssagrives-Penn*, 1950, estimated at \$80,000-120,000, an homage to his beloved wife and muse; **Lewis Wickes Hine's** *Sadie, a Cotton Mill Spinner, Lancaster, South Carolina*, 1908, estimated at \$60,000-80,000, a superb example of Hine's groundbreaking work on underage laborers in America, a body of work that subsequently led to Federal regulation; **André Kertész's** *Untitled (Distortion #167)*, 1933, estimated at \$30,000-40,000, depicting a quintessentially Modernist configuration of the human form; **Ansel Adams's** *Moonrise, Hernandez, New Mexico*, 1941, estimated at \$30,000-50,000, illustrating the celebrated American photographer's love for the American West; **Robert Heinecken's** multi-media work *Cliché Vary/Lesbianism*, 1974, estimated at \$30,000-50,000; **Walker Evans's** *Sidewalk and Shopfront, New Orleans*, 1935, estimated at \$18,000-22,000; Other highlights include **Gertrude Käsebier's** *Auguste Rodin*, 1905, estimated at \$20,000-30,000; **Robert Frank's** *Chicago*, 1956, estimated at \$15,000-25,000; and **Frederick Sommer's** *Paracelsus*, 1960, estimated at \$15,000-20,000.

As expected, many photographers whose work had been championed by the Art Institute of Chicago who are well presented in the collection include **Harry Callahan**, **Aaron Siskind**, **Walker Evans**, **Julia Margaret Cameron** and **Yasuhiro Ishimoto**.

Other works from this collection will be sold in the London Photographs sale on November 18th. Additional works will be sold exclusively online, at Phillips.com, during the month of December.

This sale will be immediately followed by the Phillips Photographs various-owners sale.



WALKER EVANS
Sidewalk and Shopfront,
New Orleans, 1935
EST \$18,000-22,000



ROBERT HEINECKEN
Cliché Vary/Lesbianism,
1974
EST \$30,000-50,000



FREDERICK SOMMER
Paracelsus, 1960
EST \$15,000-20,000



ROBERT FRANK
Chicago, 1956
EST \$15,000-25,000

PHILLIPS:

Phillips has established a commanding position in the sale of Photographs, Contemporary Art, Design, Editions and Jewelry. Through the passionate dedication of its team of global specialists,

Phillips has garnered an unparalleled wealth of knowledge of emerging market trends. Phillips conducts auctions in New York and London and has representative offices throughout Europe and in the United States. For more information, please visit: phillips.com.

- END-

Contacts:

LONDON

Alex Godwin-Brown
Head of Press & Events, Europe
agodwin-brown@phillips.com
+ 44 20 7318 4036

NEW YORK

Trish Walsh
Marketing Manager, New York
twalsh@phillips.com
+1 212 940 1224

Emma Miller Gelberg
Marketing Coordinator, New York
emiller@phillips.com
+1 212 940 1291