

PhillipsX Presents *Lynne Drexler's Garden: Works from the 1950s-1990s*

Solo Selling Exhibition of Works by Drexler to Showcase
Over 30 Paintings and Works on Paper

On View From 25 July – 10 August at 432 Park Avenue



Untitled, 1962
18 1/4 x 21 1/2 in. (46.4 x 54.6 cm)

NEW YORK – 9 JULY 2024 – PhillipsX is pleased to announce *Lynne Drexler's Garden: Works from the 1950s-1990s*, a solo exhibition of works by the acclaimed Abstract Expressionist. Featuring a group of works all drawn from private collections, the selling exhibition will be on view from 25 July to 10 August as part of Phillips' "Summer on Park" program, now in its second year, offering a range of sales and exhibitions at the company's Park Avenue flagship. The artworks chosen for *Lynne Drexler's Garden* showcase the artist's vibrant paintings and works on paper that display the key points in her artistic journey from the 1950s in Manhattan to her final two decades spent on Monhegan Island, Maine. *Lynne Drexler's Garden* is a particularly timely exhibition, with the market having shown strong demand for works by women Abstract Expressionists in recent seasons.

Robert Manley, Deputy Chairman and Worldwide Co-Head of Modern & Contemporary Art, said, "We are honored to present Lynne Drexler's incredible body of work through this selling exhibition, which highlights the Abstract Expressionist's many contributions to the art historical canon. These vibrant paintings showcase her mastery of color and composition, serving as a testament to her reputation as one of the most compelling artists of the 20th century. We look forward to welcoming collectors and enthusiasts to 432 Park for this unique opportunity to experience the extraordinary talent of Drexler and celebrate her enduring influence on Contemporary art."



Impacted Sun, 1974
oil on canvas
64 x 49 1/4 in. (162.6 x 125.1 cm)

by free brush strokes and dynamic color compositions, often referred to as the "push-pull" technique. Her early works recall the intensity of Vincent Van Gogh, Pointillism's rich opticality, and the floating bubbles of color seen in Gustav Klimt. A lover of classical music, Drexler regularly drew inspiration during live performances at the Metropolitan Opera and Carnegie Hall.

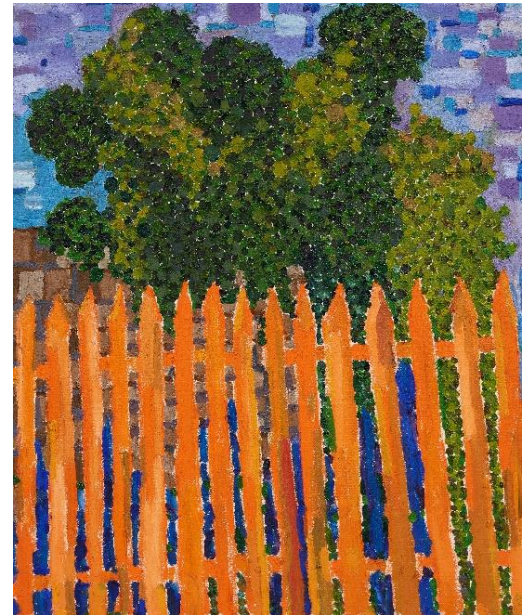
By the 1980s, her paintings and drawings evolved into naturalistic landscapes and still lifes bursting with vibrant color, deeply influenced by the rugged natural beauty of Monhegan Island, where she would spend her last two decades.



Organic Orange, 1987
oil on canvas mounted on Masonite
20 x 15 in. (50.8 x 38.1 cm)

Drexler has seen strong institutional recognition over the years, with her works having been acquired at such prestigious museums as the National Gallery of Art in Washington, D.C., the Art Institute of Chicago, and The Museum of Modern Art in New York. The Lynne Drexler Archive is represented in the U.S. by Berry Campbell Gallery, which partnered with Mnuchin Gallery in 2022 to present the first solo show of her work in New York in more than three decades. As of 2023, White Cube Gallery in London represents her outside the U.S., which will host a solo exhibition of her works from November 2024 to January 2025, marking the first major presentation of Drexler's work in Europe and highlighting her growing international acclaim.

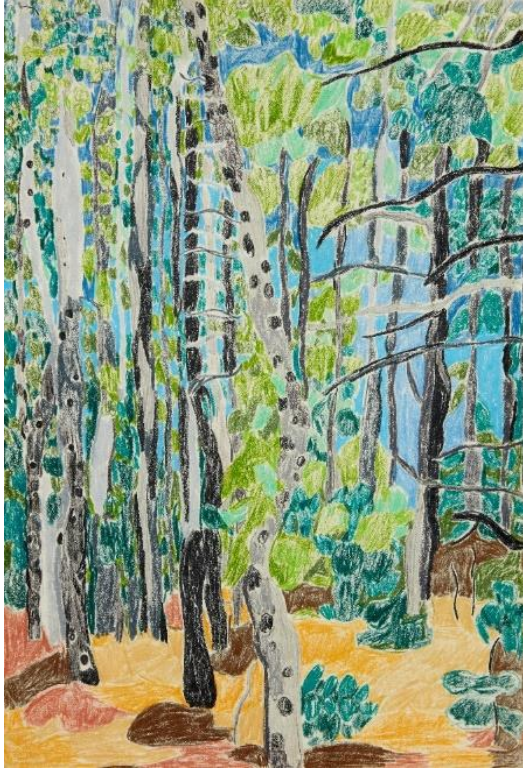
The paintings and colored pencil drawings seen in *Lynne Drexler's Garden* chart her stylistic progression over five decades. In the mid to late 1950s, Drexler moved to New York City to further her art studies under the guidance of Robert Motherwell at Hunter College and Hans Hofmann where she developed a keen interest in Abstract Expressionism. Motherwell taught her essential composition and draftsmanship techniques while Hofmann and the work of Henri Matisse influenced her to adopt a vibrant painting style characterized



Fenced Tree, 1997
oil on canvas
24 x 20 in. (61 x 50.8 cm)

These works feature upbeat representational subjects in warm palettes, transcend ordinary themes, and evolve into captivating compositions. After Drexler's passing in 1999, the Monhegan Historical and Cultural Museum Association organized the first retrospective exhibition of her work in 2008. The exhibition traveled to the Portland Museum of Art in 2008 and 2009, and interest in her work continues to flourish.

ADDITIONAL HIGHLIGHTS



Standard Bearers, 1983
17 1/2 x 12 in. (44.5 x 30.5 cm)
colored pencil and crayon on paper



Untitled, 1988
23 1/2 x 18 in. (59.7 x 45.7 cm)
colored pencil and crayon on paper

Exhibition viewing: 25 July – 10 August 2024

Location: 432 Park Avenue, New York, NY 10022

Click here for more information: www.phillips.com/store/lynne-drexler

ABOUT PHILLIPSX

PhillipsX is a dynamic selling exhibition platform operated by the global Private Sales team at Phillips, the destination for international collectors to buy and sell the world's most important Modern and Contemporary art, design, and luxury items. Through PhillipsX, Phillips' influence extends beyond the realm of auction and into the broader global cultural landscape by offering a boundary-less discovery, selling, and buying experience based on the traditional retail gallery model.

PhillipsX highlights notable artists and creators of the 20th and 21st centuries, creating new and important dialogues around established and emerging artists, movements, genres, and mediums. Through PhillipsX, the team continues to modernize collecting experiences with imagination, expertise, and relevancy.

ABOUT PHILLIPS

Phillips: where the world's curious and bold connect with the art, design, and luxury that inspires them. As a leading global platform for buying and selling 20th and 21st century works, Phillips offers dedicated expertise in the areas of Modern and Contemporary Art, Design, Photographs, Editions, Watches, and Jewels. Auctions and exhibitions are primarily held in New York, London, Geneva, and Hong Kong, with representative offices based throughout Europe, the United States, and Asia. Phillips offers a regular selection of live and online auctions, along with items available for immediate purchase. Phillips also offers a range of services and advice on all aspects of collecting, including private sales and assistance with appraisals, valuations, and financial planning.

Visit phillips.com for further information.

PRESS CONTACTS:

NEW YORK – Jaime Israni, Head of PR and Corporate Communications, Americas jisrani@phillips.com

PHILLIPS NEW YORK – 432 Park Avenue, New York, NY 10022

PHILLIPS LONDON – 30 Berkeley Square, London, W1J 6EX

PHILLIPS HONG KONG – G/F, WKCD Tower, West Kowloon Cultural District, No. 8 Austin Road, West Kowloon

FOLLOW US ON:



RED