

PHILLIPS

PRESS RELEASE

Phillips to Unveil Basquiat Masterwork at New Southampton Location Designed by studioMDA

Hamptons Outpost to Offer Specialized Programming, Including Thematic Exhibitions & Curated Auction Previews, Alongside Works to be Offered for Private Sale

Inaugural Exhibition of 20th Century & Contemporary Art, Design, Jewels, and Watches to Open on 14 August



Jean-Michel Basquiat
Portrait of A-One A.K.A. King, 1982
Estimate: \$10-15 million
20th Century & Contemporary Art Evening Sale, November 2020



Phillips Southampton
1 Hampton Road, Southampton, NY

NEW YORK - 13 AUGUST 2020 – Phillips is pleased to announce its new location in Southampton, set to open on 14 August, designed by architects studioMDA in a historically significant location at the corner of Main Street and Hampton Road, which was once Southampton Town Hall. Phillips Southampton will debut with a curated exhibition of 70 works previewing the 20th Century and Contemporary Art Evening and Day Sales, New Now, Design, and the Phillips x Artsy: Endless Summer Online-Only sale, along with a selection of watches and jewels. Leading the exhibition is Jean-Michel Basquiat's *Portrait of A-One A.K.A. King, 1982*, which will be offered in the November Evening Sale of 20th Century & Contemporary Art at \$10-15 million. The auction will mark the first time in over thirty years that the work will be offered publicly. Additional highlights from the upcoming Southampton exhibition include works by Ruth Asawa, Joan Miró, Robert Rauschenberg, Pablo Picasso, Jean Dubuffet, Nicolas Party, Otis Kwame

Kye Quaiocoe and Matthew Wong, alongside designs by Marcel Wanders and Wendell Castle and jewelry by Graff, Cartier, and Van Cleef and Arpels amongst others.

Edward Dolman, Phillips' CEO, states: "We've seen a seismic shift both in the art world and in the ecosystem of New York City. Our new location in Southampton will allow for intimate in-person viewings of exceptional works of art, jewels and watches, as well as the flexibility for our top collectors to experience artwork in person; that visceral experience is still such an integral element to appreciating art. We are pleased to inaugurate the space with such an impressive array of artworks, including our highlight from the November Evening Sale, Jean-Michel Basquiat's *Portrait of A-One A.K.A. King*."

Cheyenne Westphal, Phillips' Chairwoman, adds, "*Portrait of A-One A.K.A. King* is an exemplary work from the apex of Basquiat's career, painted in 1982 when he was producing important works of art, free from the constraints and pressures of gallerists and the art market. This portrait has long been recognized across the globe for its significance, most recently having been included in the groundbreaking exhibition *Keith Haring | Jean-Michel Basquiat: Crossing Lines* at the National Gallery of Victoria in Melbourne. Its inclusion in our November Evening Sale marks the first time in over three decades that the work will be offered to the public."

Energized by a string of career-launching exhibitions, Basquiat spent 1982 executing depictions of those close to him with invigorated passion —pictures which today are widely considered to be the finest of his career. A nod to Basquiat's community and time as a street artist, *Portrait of A-One A.K.A. King* portrays the artist's close friend and collaborator, legendary New York graffiti artist A-One, standing before a wall covered in tags. Basquiat's signature word play is present in both the painting's title and motifs: in street vernacular, a "king" refers to a highly-regarded graffiti writer that's renowned for his skill, often incorporating a crown into his work. Evoking both street culture and the art historical genre of royal portraiture, the crown became one of the artist's most enduring and recognizable pictorial tropes, which Basquiat used to celebrate the Black experience—anointing pop culture icons, his friends, and himself. An additional highlight from the November Evening Sale to be included in the Southampton inaugural exhibition is Ruth Asawa's *Untitled (S.045, Hanging Five-Lobed Continuous Forms Within a Form, with Spheres Suspended in the First, Second and Third Lobes)*, circa early 1960s . A major example from her oeuvre, the work comes to market at a time of great interest in the artist's legacy, including a recently released biography, US Postal Service stamps celebrating her work, and a newly set world record price.

Phillips Southampton will serve as a space to showcase specialized programming, including thematic selling exhibitions, as well as curated selections of auction highlights alongside works being offered for private sale across 20th Century and Contemporary Art, Design, Photographs, Editions and Works on Paper, Jewels and Watches.

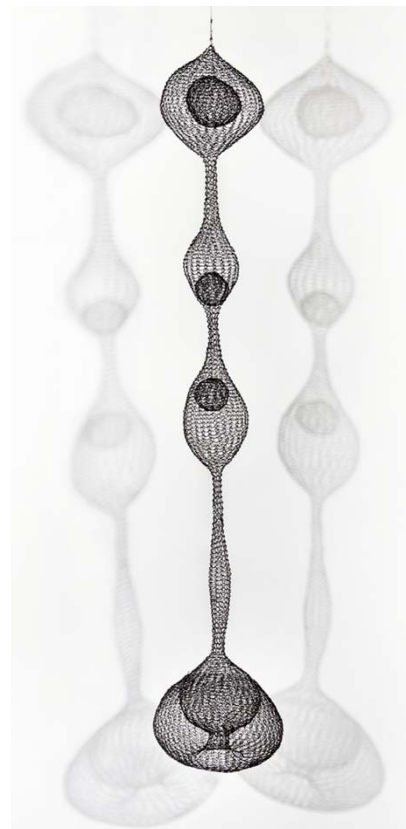
studioMDA's Markus Dochantschi states: "In converting the historic Southampton Town Hall to a contemporary space, we are engaging with the East End community while enriching the cultural scene established by living local artists, various new art galleries and art institutions, including the Parrish Art Museum and the Community Arts Center, a former church converted by artist Eric Fischl. We will provide a new kind of programmed space that enhances the vibrant art scene of Southampton, while integrating it with the historic context."

The nearly 6,000 square foot, two-level space at 1 Hampton Road will be open Tuesday – Sunday 11am – 6pm, and will adhere to social distancing and face covering regulations.

Ruth Asawa

Untitled (S.045, Hanging Five-Lobed Continuous Forms Within a Form, with Spheres Suspended in the First, Second and Third Lobes),
circa early 1960s

20th Century & Contemporary Art Evening Sale, November 2020





Property from the Estate of Ruth O'Hara
Joan Miró

Danse (Figures), 1936

Estimate: \$250,000-350,000

20th Century & Contemporary Art Day Sale, Morning Session, November 2020



Property from the Estate of Ruth O'Hara
Robert Rauschenberg

Untitled, 1961

Estimate: \$250,000-350,000

20th Century & Contemporary Art Day Sale, Morning Session, November 2020



Otis Kwame Kye Quai'coe

Old Town Boy, 2019

Estimate: \$30,000-50,000

New Now, September 2020



Barry McGee

Untitled (Head), 2006

Estimate: \$4,000-6,000

Phillips x Artsy: Endless Summer



José Parlá

February Days, 2014

Estimate: \$40,000-60,000

Phillips x Artsy: Endless Summer



Matthew Wong

Blue Tree, 2016

Estimate: \$50,000-70,000

New Now, September 2020



Nicolas Party

Untitled (Landscape), 2013

Estimate: \$60,000-80,000

New Now, September 2020



Walton Ford

Killy, 2019

Estimate: \$12,000-18,000

Phillips x Artsy: Endless Summer



Property from the Estate of Ruth O'Hara

Robert Rauschenberg
Untitled, 1968

Estimate: \$180,000-250,000

20th Century & Contemporary Art Day Sale, Morning Session,
November 2020

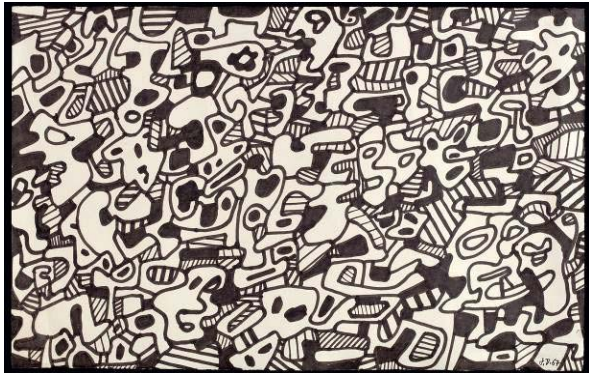


Pablo Picasso

Personnage endormie et femme accroupie VIII, 1947

Estimate: \$150,000-200,000

20th Century & Contemporary Art Day Sale, Morning Session,
November 2020

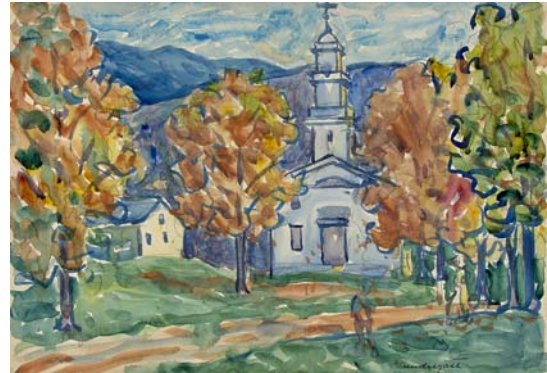


Jean Dubuffet

Texte Logologique VI, 1967

Estimate: \$40,000-60,000

20th Century & Contemporary Art Day Sale, Morning Session,
November 2020



Maurice Brazil Prendergast

Autumn in New England, circa 1910-1913

Estimate: \$15,000-25,000

20th Century & Contemporary Art Day Sale, Morning Session,
November 2020

###

ABOUT PHILLIPS

Phillips is a leading global platform for buying and selling 20th and 21st century art and design. With dedicated expertise in the areas of 20th Century and Contemporary Art, Design, Photographs, Editions, Watches, and Jewelry, Phillips offers professional services and advice on all aspects of collecting. Auctions and exhibitions are held at salerooms in New York, London, Geneva, and Hong Kong, while clients are further served through representative offices based throughout Europe, the United States and Asia. Phillips also offers an online auction platform accessible anywhere in the world. In addition to providing selling and buying opportunities through auction, Phillips brokers private sales and offers assistance with appraisals, valuations, and other financial services.

Visit www.phillips.com for further information.

**Estimates do not include buyer's premium; prices achieved include the hammer price plus buyer's premium.*

PRESS CONTACT: NEW YORK - Jaime Israni, *Senior Public Relations Manager*

jisrani@phillips.com

+1 212 940 1398

PHILLIPS NEW YORK - 450 Park Avenue, New York, NY 10022

PHILLIPS LONDON - 30 Berkeley Square, London, W1J 6EX

PHILLIPS HONG KONG - 14/F St. George's Building, 2 Ice House Street, Central Hong Kong

PHILLIPS GENEVA - Rue de la Confédération, 7 Geneva 1204

VISIT US AT: www.phillips.com

FOLLOW US ON: [Twitter](#) | [Instagram](#) | [Vimeo](#) | [Facebook](#) | [LinkedIn](#) | [Weibo](#) | [WeChat](#) (use QR Code to right)

