

# PHILLIPS

PRESS RELEASE

## Phillips Announces *Women on the Press*

Online-Only Auction to Feature a Trove of Prints and Unique Monotypes by a Pantheon of Women Creating Throughout the 20th & 21st Centuries

Including Works by Louise Fishman, Judy Chicago, Howardena Pindell, Lynda Benglis, Mary Weatherford, Beverly Pepper, Amy Sillman, & Jennifer Bartlett



**Louise Fishman**  
*Grey Red, 2005*  
Estimate: \$1,000 – 2,000

NEW YORK - 20 SEPTEMBER 2021 – Phillips is pleased to announce *Women on the Press*, an impressive single owner, private collection of eye-opening works, by extraordinary women artists of the 20th century and contemporary art. To be offered at auction on the Gallery One platform from 23-30 September, *Women on the Press* uncovers 58 artworks, many fresh-to-market, at no reserve from a multitude of creators. Artists include Louise Fishman, Judy Chicago, Lynda Benglis, Howardena Pindell, Mary Weatherford, Amy Sillman, Arlene Shechet, Edna Andrade, Huma Bhabha, Jennifer Bartlett, Beverly Pepper, Joan Snyder, Julia Fernandez-Pol, Kiki Smith, Leslie Dill, Lisa Yuskavage, Melissa Meyer, Mia Westerlund Roosen and Sylvia Plimack Mangold.

Sarah Browne, Associate Specialist, Editions remarks, “We are eager to present this private collection to our international community through Gallery One. The captivating artworks of *Women on the Press* bring a renewed focus to the artists who were part of the incredible leaps and explorations made in the field of printmaking, beginning in the 1970s up to the 1990s and 2000s.”

Highlights include a selection of works from Fishman, Benglis, and Chicago. Louise Fishman's etchings and monotypes celebrate her inventiveness and commitment to the artmaking process. As someone who celebrates layering, texture and exploration of materials, Fishman is a natural printmaker. Fishman created *Grey Red* using the plates from another etching edition, playing with their printing order and the layering of color. The result is this unique monoprint, imbued with Fishman's painterly ethos.

Influenced by the American Western landscape, the selection of monotypes and prints by Lynda Benglis demonstrates her gestural approach. *Untitled #41* borrows a color palate from dusk and walks an ambiguous line between landscape and abstraction.

*Potent Pussy/Homage to Lamont* and *Potent Pussy/Homage to Lamont B* are trial proofs aside from Judy Chicago's 1973 portfolio of the same name. These prints explore women's agency, sexuality and mark the first time Chicago links her vaginal imagery to her love of cats.



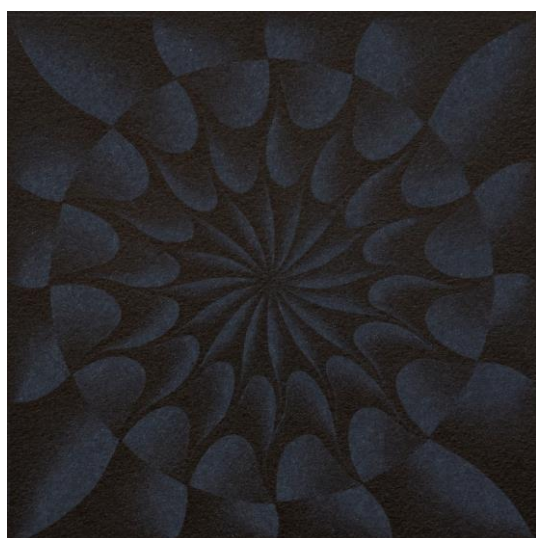
**Louise Fishman**  
*Briefs and Motions 121, 2009*  
Estimate: \$1,000 – 2,000



**Lynda Benglis**  
*Untitled #41, 1998*  
Estimate: \$1,000 – 2,000



**Lisa Yuskavage**  
*Night Flowers, from Exit 99, 1999*  
Estimate: \$1,500 – 2,500



**Judy Chicago**  
*Potent Pussy/Homage to Lamont B, 1973*  
Estimate: \$800 – 1,200



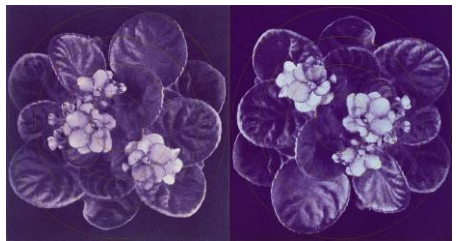
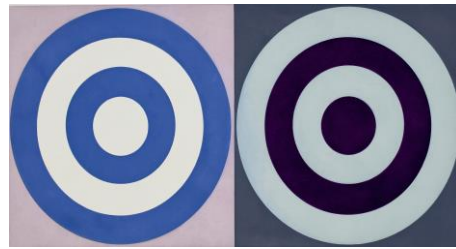
**Sylvia Plimack Mangold**  
*The Maple Tree, 1990*  
Estimate: \$400 – 600



**Howardena Pindell**  
*Kyoto (Positive/Negative)*, 1980  
 Estimate: \$3,000 – 5,000



**Amy Sillman**  
*Everybody, Part One*, 1999  
 Estimate: \$800 – 1,200



**Mary Weatherford**  
*Odile #5; Violetta #2; Violetta #4; Violetta #3*, 1991  
 Estimate: \$2,000 – 4,000

**Auction:** 23-30 September 2021  
**Auction Live Online:** 23 September  
**Location:** 432 Park Avenue, New York

###

**ABOUT PHILLIPS**

Phillips is a leading global platform for buying and selling 20th and 21st century art and design. With dedicated expertise in the areas of 20th Century and Contemporary Art, Design, Photographs, Editions, Watches, and Jewelry, Phillips offers professional services and advice on all aspects of collecting. Auctions and exhibitions are held at salerooms in New York, London, Geneva, and Hong Kong, while clients are further served through representative offices based throughout Europe, the United States and Asia. Phillips also offers an online auction platform accessible anywhere in the world. In addition to providing selling and buying opportunities through auction, Phillips brokers private sales and offers assistance with appraisals, valuations, and other financial services.

Visit [www.phillips.com](http://www.phillips.com) for further information.

*\*Estimates do not include buyer's premium; prices achieved include the hammer price plus buyer's premium.*

**PRESS CONTACTS:**

NEW YORK – Magda Grigorian, Chief Communications Officer [mgrigorian@phillips.com](mailto:mgrigorian@phillips.com) +1 212 940 1384  
NEW YORK – Jaime Israni, Public Relations Director, Americas [israni@phillips.com](mailto:israni@phillips.com) +1 212 940 1398

**PHILLIPS NEW YORK** - 450 Park Avenue, New York, NY 10022

VISIT US AT: [www.phillips.com](http://www.phillips.com)

FOLLOW US ON: [Twitter](#) | [Instagram](#) | [Vimeo](#) | [Facebook](#) | [LinkedIn](#) | [Weibo](#) | [WeChat](#) (use QR Code)

