

# PHILLIPS

PRESS RELEASE

## Phillips Announces Livestreamed Design Auction on July 29 Featuring Important Works Spanning the 20th and 21st Centuries

Works by Designers Including Alberto Giacometti, Jeroen Verhoeven, Wendell Castle, Jean Prouvé, Lucie Rie and Hans Coper Among Others Highlight the Sale



**Jeroen Verhoeven**  
"Cinderella" table, 2004-2007  
Estimate: \$100,000-150,000

NEW YORK - 23 JULY 2020 – Phillips is pleased to announce the forthcoming Design auction featuring a curated selection of important design from across the 20th and 21st centuries. Featuring an enhanced virtual experience and livestreamed via custom-built salesrooms in London and New York on July 29, Phillips will telegraph the excitement and energy of a live sale to collectors worldwide. Showcasing more than 120 works hailing from important collections including the Estate of Claire Frankel alongside remarkable works of French and Dutch design the sale is highlighted by designers including Alberto Giacometti, Jeroen Verhoeven, Jean Prouvé, Wendell Castle, Jean Dunand, Lucie Rie and Hans Coper, Studio Job, Charlotte Perriand, Ron Arad, Shiro Kuramata, Ingrid Donat, Harry Bertoia, Peter Voulkos, and George Nakashima amongst others.

**Cordelia Lembo, Phillips' Head of Department**, said "We are thrilled to present our signature mix of iconic design alongside the work of emerging designers, offering a compelling picture of design across the 20th and 21st centuries and offering our collectors a sense of discovery that is unique to Phillips. Furthermore, 2020 has proven to be a year where we've seen a greater importance placed on our domestic environments and we've seen sustained interest in design around the world."

Phillips presents important design across all categories including furniture, lighting, sculpture and ceramics. Highlighting the sale are two rare and remarkable lamps by the renowned 20th century sculptor Alberto Giacometti. The *Écossais table lamp*, circa 1935, is crafted from plaster and features a stylized figure that comes to life through

the play of shadow and light across the pristine white surface.” *Tête de Femme*, designed circa 1934, is fabricated from cast bronze and has a beautiful rich patina.



**Alberto Giacometti**  
"Écossais" table lamp, circa 1935  
Estimate: \$100,000-150,000



**Alberto Giacometti**  
"Tête de femme" table lamp, designed circa 1934, later cast  
Estimate: \$120,000-180,000

Also highlighting the sale is the iconic "*Cinderella*" Table by Jeroen Verhoven, one of the most innovative and sought after designers of the 21st century. Verhoven became a nearly overnight success with the debut of the "*Cinderella*" table produced from 2004 – 2007. The deconstructed CNC-cut birch plywood table form is complex—from different vantage points, the table takes on entirely unique shapes. Just as the Cinderella fairytale is a story of transformation, the table transforms based on the viewer's perspective. To construct the table, Verhoeven began by drawing the silhouettes of a baroque table and a bombé chest, iconic furniture forms from the 17<sup>th</sup> and 18<sup>th</sup> centuries respectively. He then used computer software to merge the silhouettes into one three-dimensional form. By combining these two forms, Verhoeven simultaneously injected himself into a centuries-long history of exquisite artistry and craftsmanship while also heralding a new vision for the future of design. The "*Cinderella*" table belongs to the permanent collection of museums such as the Museum of Modern Art, New York, the Victoria and Albert Museum, London, and the Centre Pompidou, Paris.

Phillips presents a curated selection of ceramics positioning emerging ceramists such as Seiji Kobayashi alongside well-established names such as Lucie Rie and Peter Voulkos.

Eleven works by Lucie Rie and Hans Coper come to Phillips from the journalist Claire Frankel's Estate. Frankel began acquiring Rie's work during the early 1980s and the sale celebrates this modern British potter. The collection includes one lot, *Ovoid pot with disc*, circa 1965, by Hans Coper, with whom Rie worked closely with for more than thirty years.



**Lucie Rie**  
Ceramics Installation

The sale debuts two works by Studio Job, the duo Job Smeets and Nynke Tynagel, *Cabinet*, 2006-2007, and *Floor Lamp*, 2006-2007, both from the designer's "Robber Baron" series. Renowned for their conceptual sculptural objects that walk the line between design and art, Studio Job's limited-edition *Robber Baron* series was imagined as a tongue-in-cheek critique of wealth and power, inspired by nineteenth-century tycoons and designed to appeal to the oligarchs of the present day. The sculptural *Floor Lamp*, standing more than five feet tall, takes the form of a miniature skyscraper encircled by a halo of clouds. The cast and gilded bronze *Cabinet* is inspired by a 17<sup>th</sup>-century wardrobe designed by the noteworthy André-Charles Boulle renowned for his intricate inlay of bronze and tortoise shell. Studio Job reimagines this type of large-scale case furniture, enlivening the gilded cast bronze surface with imagery of industrial doom: machinery, hazard signs and crossbones punctuated by a large blast hole in the center.

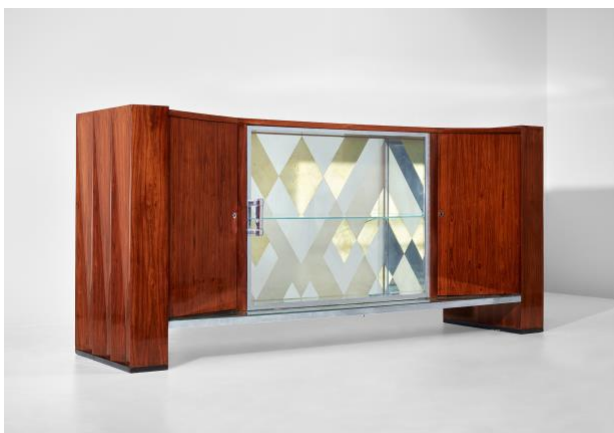
Phillips also presents an *Important argentier* by French designer Charlotte Perriand from 1927, crafted from Brazilian rosewood-veneered wood, kingwood-veneered wood, ebonized wood, nickel-plated metal, glass, reverse-decorated mirrored glass. By joining the atelier of Le Corbusier in 1927, Perriand who had already received acclaim for her designs, further solidified her place as a designer of note in post-war France. The *argentier* (silver display cabinet) is a key piece from a particularly pivotal year in Perriand's long and illustrious career, marking her shift from Art Deco towards modernism, and reflecting ideas about materials and space that she would continue to explore in the decades to come.



**Studio Job – Job Smeets and Nynke Tynagel**  
*Floor lamp*, from the "Robber Baron" series, 2006-2007  
 Estimate: \$40,000-60,000



**Studio Job – Job Smeets and Nynke Tynagel**  
*Cabinet*, from the "Robber Baron" series, 2006-2007  
 Estimate: \$40,000-60,000



**Charlotte Perriand**  
*Important argentier*, 1927  
 Estimate: \$40,000-60,000



**Wendell Castle**  
*Dining Table, 1974*  
Estimate: \$80,000 - 120,000



**Wendell Castle**  
*Pair of Chairs, 1967*  
Estimate: \$80,000 - 120,000



**Wendell Castle**  
*Settee, 2006*  
Estimate: \$60,000-80,000

The sale also features an important grouping of works by contemporary designer Wendell Castle, known for his functional yet flawlessly crafted design. Among his innovative forms are the pair of chairs from 1967, whose undulating and ergonomic curvilinear forms challenge the traditional vernacular of a chair.

### Additional Highlights



**Ron Nagle**  
*"Designated Diver", 2011*  
Estimate: \$8,000-12,000



**Jay Sae Jung Oh**  
*Unique "Savage Chair\_ Black Edition\_2014", 2014*  
Estimate: \$6,000-8,000



**Bruno Gregory**  
*Unique "Integrated System (Construction 2)" vanity, 1987*  
Estimate: \$6,000-80,000



**Stilnovo**  
*Ceiling light, 1950s*  
Estimate: \$5,000-7,000



**Jean Dunand**  
*Important vase, circa 1913*  
Estimate: \$60,000-80,000



**Jean Prouvé**  
*"Cit " armchair, circa 1932*  
Estimate: \$100,000-150,000

**Auction:** 29 July 2020

**Auction viewing:** 18-28 July 2020

**Location:** 450 Park Avenue, New York

**Click here for more information:** <https://www.phillips.com/auctions/auction/NY050120>

###

#### ABOUT PHILLIPS

Phillips is a leading global platform for buying and selling 20th and 21st century art and design. With dedicated expertise in the areas of 20th Century and Contemporary Art, Design, Photographs, Editions, Watches, and Jewelry, Phillips offers professional services and advice on all aspects of collecting. Auctions and exhibitions are held at salerooms in New York, London, Geneva, and Hong Kong, while clients are further served through representative offices based throughout Europe, the United States and Asia. Phillips also offers an online auction platform accessible anywhere in the world. In addition to providing selling and buying opportunities through auction, Phillips brokers private sales and offers assistance with appraisals, valuations, and other financial services.

Visit [www.phillips.com](http://www.phillips.com) for further information.

*\*Estimates do not include buyer's premium; prices achieved include the hammer price plus buyer's premium.*

#### PRESS CONTACTS:

NEW YORK - Sarah Brown McLeod, Consultant

[sarah@sarabrownmcleod.com](mailto:sarah@sarabrownmcleod.com)

+1 917 549 3919

PHILLIPS NEW YORK - 450 Park Avenue, New York, NY 10022

PHILLIPS LONDON - 30 Berkeley Square, London, W1J 6EX

PHILLIPS HONG KONG - 14/F St. George's Building, 2 Ice House Street, Central Hong Kong

PHILLIPS GENEVA - Rue de la Confédération, 7 Geneva 1204

VISIT US AT: [www.phillips.com](http://www.phillips.com)

FOLLOW US ON: [Twitter](#) | [Instagram](#) | [Vimeo](#) | [Facebook](#) | [LinkedIn](#) | [Weibo](#) | WeChat (use QR Code)

